



创新 让品质更可靠

INNOVATION MAKES QUALITY MORE RELIABLE



生产基地: 中国河南太康锅炉产业园
Address: Boiler Industrial Zone, Taikang, Henan, China
website: www.yxboiler.com
E-mail: sales@yxboiler.com
WhatsApp: +86-13037600603

ABOUT YONGXING BOILER YXBOILER

关于永星

永星工业设备（永星锅炉）的前身可追溯至1956年河南省东部的一家农业机械修配合作社，当时主要由铁匠和焊工组成，从事农具修造工作。

1983年，经县政府批准正式开始工业锅炉生产，并正式命名为“永星”（寓意“永远兴旺”）。1999年，在市场经济改革中，全体员工集资买断工厂，顺利完成从国有企业向民营企业的转变。

经过70年的传承与40余年的专业锅炉制造历程，永星工业设备已发展成为一家集研发、设计、生产、销售、安装及改造服务于一体的现代化特种设备企业。公司现占地6.6万平方米，拥有先进生产设备300余台，员工800余人，其中高级工程师86人。公司产品线涵盖燃油燃气锅炉、燃煤锅炉、生物质锅炉、导热油锅炉、电锅炉、余热锅炉、循环流化床锅炉及压力容器等八大类、28个系列、300多种型号。产品广泛应用于食品、纺织、化工、制药、建材、冶金、电力、供热等行业，已累计为全球完成超过12,000个工程项目。

作为国内较早从事锅炉制造的企业之一，公司于2003年获得A级锅炉制造许可证（中国最高级别），并相继取得ASME、CE、ISO9001、ISO14001等多项国际国内权威认证。凭借过硬的产品质量和完善的售后服务，永星锅炉深受中石油、中粮、双汇、伊利、蒙牛、比亚迪等国内外知名企业的信赖，产品远销全球80多个国家和地区。

“为用户创造价值”是永星工业设备的初心。公司将始终坚持技术创新与品质至上，致力于成为全球清洁能源锅炉领域的领先制造商，为国内外用户提供高效、环保、安全、可靠的锅炉及压

YONGXING INDUSTRIAL EQUIPMENT (YXBOILER) traces its roots back to 1956, when it started as an agricultural machinery repair cooperative in eastern Henan Province, primarily consisting of blacksmiths and welders engaged in making and repairing farm tools.

In 1983, with approval from the county government, the factory officially began producing industrial boilers and adopted the name “YONGXING” (永星), meaning “eternal prosperity.” In 1999, during China’s market economy reforms, all employees pooled their savings to buy out the factory, successfully transforming it from a state-owned enterprise into a private company.

After 70 years of inheritance and more than 40 years of specialized boiler manufacturing, YONGXING INDUSTRIAL EQUIPMENT has grown into a modern special equipment enterprise integrating R&D, design, manufacturing, sales, installation, and modification services.

The company currently occupies 66,000 square meters, with over 300 sets of advanced production equipment and more than 800 employees, including 86 senior engineers.

YONGXING’s product range covers eight major categories — oil/gas boilers, coal-fired boilers, biomass boilers, thermal oil heaters, electric boilers, waste heat boilers, circulating fluidized bed boilers, and pressure vessels — with 28 series and over 300 models. The products are widely used in food, textile, chemical, pharmaceutical, building materials, metallurgy, power generation, and district heating industries. To date, the company has successfully completed more than 12,000 projects worldwide.

As one of the early boiler manufacturers in China, YONGXING obtained the A-Class Boiler Manufacturing License (the highest qualification in China) in 2003, and has since acquired multiple international certifications including ASME, CE, ISO 9001, and ISO 14001. With superior product quality and comprehensive after-sales service, YONGXING BOILER has earned the trust of many renowned enterprises such as PetroChina, COFCO, Shuanghui, Yili, Mengniu, BYD, and others. Its products are now exported to more than 80 countries and regions around the world.

“Creating value for customers” is the founding mission of YONGXING INDUSTRIAL EQUIPMENT. The company will continue to uphold technological innovation and quality excellence, striving to become a leading global manufacturer in the clean energy boiler field, and providing efficient, environmentally friendly, safe, and reliable boiler and pressure vessel solutions to customers worldwide.

CATALOGUE

目录

02	WNS 型超低氮燃气锅炉	WNS ultra low NOx gas fired boiler
06	WNS 型一体式冷凝锅炉	WNS integrated condensing boiler
10	SZS 型燃油燃气锅炉	SZS oil/gas fired boiler
14	ZZJ/ZLJ 型冷凝真空热水锅炉	ZZJ/ZLJ condensing vacuum hot water boiler
18	WDR 型电加热锅炉	WDR electric heating boiler
22	DZH 型生物质（燃煤）锅炉	DZH manually biomass (coal) fired boiler
26	DZL 型生物质（燃煤）锅炉	DZL biomass (coal) fired boiler
30	SZL 型生物质（燃煤）锅炉	SZL biomass (coal) fired boiler
34	YY(Q)W 型燃油燃气导热油炉	YY(Q)W oil/gas fired thermal fluid heater
38	YGL 型生物质（燃煤）导热油炉	YGL biomass (coal) fired thermal fluid heater
42	YLW 型生物质（燃煤）导热油炉	YLW biomass (coal) fired thermal fluid heater

生产基地: 中国河南太康锅炉产业园
Address: Boiler Industrial Zone, Taikang, Henan, China
website: www.yxboiler.com
E-mail: sales@yxboiler.com
WhatsApp: +86-13037600603

YXBOILER.COM YXBOILER.COM YXBOILER.COM YXBOILER.COM YXBOILER.COM YXBOILER.COM

· WNS型 ·

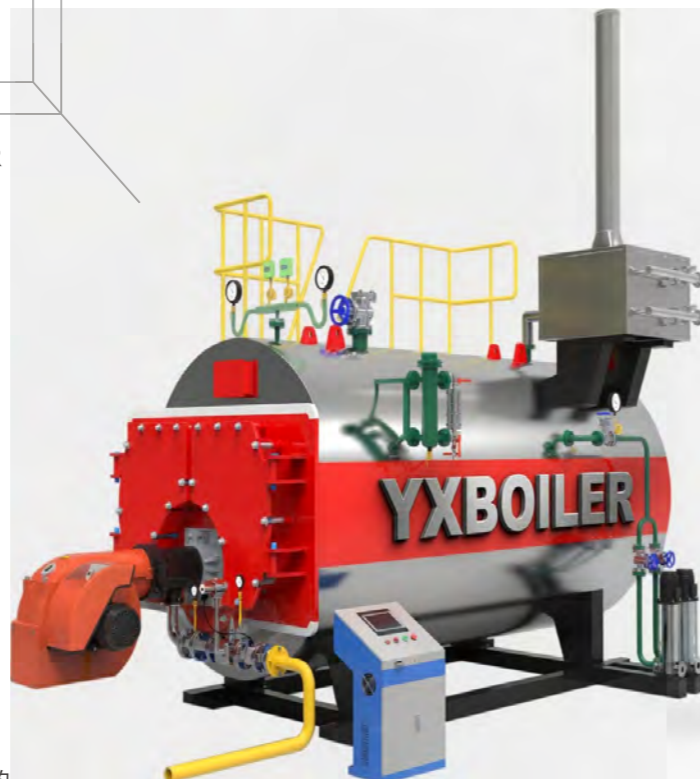
超低氮燃气锅炉
为环保而生

WNS ULTRA LOW NO_x GAS FIRED BOILER

产品简介 PRODUCT INTRODUCTION

永星的WNS型超低氮燃气锅炉是采用先进工艺生产的锅壳式三回程湿背燃气锅炉，由锅炉本体、连接烟道、除氧泵、除氧器、燃烧器、汽水系统、仪表、节能器等组成。与旧式锅炉相比，它最突出的特点是低氮(锅炉的运行过程中，氮氧化物排放量大大减少，可达30mg/m³以下，符合国家的政策要求)。再加上此锅炉具有结构紧凑、外形美观、操作简单、运行安全可靠等特点，现已被广泛地应用于各行各业。

本产品是卧式内燃燃油(气)快装锅炉，采用湿背式结构。波形炉胆及回燃室为第一回程，第二、三回程为烟管，锅炉上部布置节能器。锅炉配备有完善的全自动控制装置和安全保护装置；具有高、低水位报警和低水位连锁保护功能；锅炉自动点火、燃烧器火力自动调节和熄火保护，保证锅炉的安全运行。该产品的设计燃料为轻油或天然气；燃料从燃烧器喷出，被电子点火棒点燃，在炉胆内微正压燃烧，燃尽后的高温烟气由回燃室转弯180°进入第二、三回程烟管，由后烟箱上部转弯180°进入节能器换热后通过烟肉排入大气。



WNS ultra-low nitrogen gas fired boiler adopts advanced shell type & three-returns wet-back structure, which consists of boiler body, connecting flue, deaerator pump, deaerator, burner, steam-water system, instruments, economizer, etc. Its most prominent feature is low nitrogen, the nitrogen oxide emissions is under 30mg/m³ during boiler operation. With the characteristics of compact structure, beautiful outlook, simple operation, safe and reliable operation, it has been widely used in many different industries.

It is a horizontal internal combustion oil (gas) fast loading boiler with wet back structure. The first return is made of the corrugated furnace and the backfire chamber, the second and third return are smoke pipes, and equipped with economizer on the top of boiler. Equipped with complete automatic control device and safety protection device, which has high and low water level alarm and low water level interlocking protection functions; Automatic boiler ignition, automatic adjustment of burner fire power and flameout protection ensure the safe operation of the boiler. The design fuel of boiler is light oil or natural gas; the fuel is ejected from the burner, ignited by the electronic ignition rod, and burned with slight positive pressure in the furnace liner. After full combustion, the high-temperature flue gas enters the second and third return flue gas pipes by turning 180° from the combustion chamber, and enters the economizer by turning 180° from the upper part of the rear flue gas box for heat exchange, then discharge into the atmosphere through the chimney.

系统图 SYSTEM DIAGRAM

- 蒸汽管道 Steam Pipeline
- 水管道 Water Pipeline
- 天然气管道 Natural Gas Pipeline



设备名称 Equipment Name

- | | |
|------------------------|-----------------------|
| ① 锅炉 Boiler | ⑥ 给水泵 Feed Water Pump |
| ② 水箱 Water Tank | ⑦ 燃烧器 Burner |
| ③ 软水器 Water Softener | ⑧ 节能器 Economizer |
| ④ 循环泵 Circulation Pump | ⑨ 分汽缸 Steam Header |
| ⑤ 除氧泵 Deaerator Pump | ⑩ 除氧器 Deaerator |

生产基地: 中国河南太康锅炉产业园
Address: Boiler Industrial Zone, Taikang, Henan, China
website: www.yxboiler.com
E-mail: sales@yxboiler.com
WhatsApp: +86-13037600603

YXBOILER.COM YXBOILER.COM YXBOILER.COM YXBOILER.COM YXBOILER.COM YXBOILER.COM

性能特点 PERFORMANCE CHARACTERISTICS

采用硅酸铝纤维板作为保温材料，其保温性能好、重量轻，方便运输和安装。

Adopted aluminum silicate fiberboard as heat preservation material, with good heat preservation performance, light weight and convenient transportation and installation.

前、后烟箱采用整体式对开门结构，美观大方，性能优越，检修时开启轻便，密封性良好。

The front and rear smoke boxes adopt the integral opposite door structure, which is beautiful and elegant, with superior performance, sealed well, and opened easily during maintenance.

炉顶布置节能器，节能器由40根φ32×3螺旋翅片管组成，大大增加受热面，降低锅炉排烟温度。

Equipped with economizer on the top of boiler. The economizer is composed of 40pcsφ32×3 spiral finned tubes, which greatly increases the heating surface and reduces the exhaust gas temperature of the boiler.

采用原装进口燃烧器，自动化程度高，从预吹扫、点火、火力自动转换到自动停炉及熄火保护，均可实现全自动控制。

Adopted original imported burner with high automation. Realized full automatic control of pre-purge, ignition, automatic conversion of fire power, automatic boiler shutdown and flameout protection.

锅炉配备完善的全自动控制装置和安全保护装置，具有高低水位报警和低水位连锁保护功能。锅炉自动点火、燃烧器火力自动调节和熄火保护，保证锅炉的安全运行。

Equipped with complete automatic control device and safety protection device, with high and low water level alarm and low water level interlock protection function. Boiler automatic ignition, burner fire automatic regulation and flameout protection, to ensure the safe operation of the boiler.

锅炉上部设有人孔装置，下部设有检查装置，便于维护和保养。

Equipped with manhole device on upper part and inspection device on lower part of boiler, easy maintenance.

配备有水位计、水位控制报警器、压力表、压力控制器以及气路、水路流量计，充分满足监视及控制要求，安全性一流。

Equipped with water level gauge, water level control alarm, pressure gauge, pressure controller and gas and water flow meters, fully meet the monitoring and control requirements, with first-class safety.

应用FGR烟气再循环技术，有效降低氮氧化物含量，使其氮氧化物排放达到30mg/m³以下，远远低于国家规定标准。

The application of FGR flue gas recycling technology effectively reduce the content of nitrogen oxides and make the emission of nitrogen oxides below 30mg / m³, which is far lower than the national standard.

技术参数 TECHNICAL PARAMETERS

蒸汽锅炉 Steam Boiler

型号规格 Model	额定蒸发量 Rated Steam Capacity (t/h)	额定工作压力 Rated Working Pressure (MPa)	饱和蒸汽温度 Saturated Steam Temperature (°C)	锅炉热效率 Nitrogen Oxides (mg/m ³)	设计燃料 Design Fuel	最大运输重量 Max Transport Weight (kg)	最大运输尺寸 Max Transport Dimension(LxWxH) (mm)
unit							
WNS1-1.25-YQ	1			95.5		5500	3300x1800x2200
WNS2-1.25-YQ	2			95.6 / 96.1		7500	4000x2000x2950
WNS3-1.25-YQ	3			95.8 / 96	天然气	8000	4350x2200x2600
WNS4-1.25-YQ	4	1.0	184	96 / 96.1	轻油	10000	4800x2300x2800
WNS6-1.25-YQ	6	1.25	194	95.8 / 96	重油等	14000	5400x2500x2950
WNS8-1.25-YQ	8	1.6	204	95.5 / 96.1	Natural Gas, Light Oil, Heavy Oil, etc.	20226	6955x2480x2986
WNS10-1.25-YQ	10	2.5	225	95.7 / 96.2		21500	6300x2700x3200
WNS12-1.25-YQ	12			96 / 96.1		23000	6700x2700x3200
WNS15-1.25-YQ	15			95.9 / 96.4		27700	7365x3200x3508
WNS20-1.25-YQ	20			96.1 / 96.5		30000	8050x3750x3960

承压热水锅炉 Pressure Bearing Hot Water Boiler

型号规格 Model	额定热功率 Rated Heat Power (MW)	额定工作压力 Rated Working Pressure (MPa)	额定出/回水温度 Rated Outlet/Return Temp (°C)	锅炉热效率 Nitrogen Oxides (mg/m ³)	设计燃料 Design Fuel	最大运输重量 Max Transport Weight (Kg)	最大外型尺寸 Max Dimension (mm)
unit							
WNS0.7-0.7/95/70-YQ	0.7					7000	3400x1500x1860
WNS1.4-0.7/95/70-YQ	1.4					7200	4450x2000x2450
WNS2.1-1.0/95/70-YQ	2.1				天然气	7200	4100x2000x2450
WNS2.8-1.0/95/70-YQ	2.8				轻油	8000	5000x2050x2500
WNS3.5-1.0/95/70-YQ	3.5	0.7	95/70	95.4 / 96.1	重油等	14900	5300x2400x2700
WNS4.2-1.0/95/70-YQ	4.2	1.0	115/70		Natural Gas, Light Oil, Heavy Oil, etc.	18600	5300x2380x2650
WNS5.6-1.0/95/70-YQ	5.6					21500	6800x2600x3000
WNS7-1.0/95/70-YQ	7					26000	6300x2700x3200
WNS10.5-1.0/95/70-YQ	10.5					40000	8700x3700x3500
WNS14-1.0/95/70-YQ	14					48600	8050x3750x3950

常压热水锅炉 Atmospheric Pressure Hot Water Boiler

型号规格 Model	额定热功率 Rated Heat Power (MW)	额定工作压力 Rated Working Pressure (MPa)	额定出/回水温度 Rated Outlet/Return Temp (°C)	锅炉热效率 Nitrogen Oxides (mg/m ³)	设计燃料 Design Fuel	最大运输重量 Max Transport Weight (kg)	最大外型尺寸 Max Dimension (mm)
unit							
CWNS0.7-95/70-YQ	0.7					4320	3200x1800x2000
CWNS1.4-95/70-YQ	1.4					6300	3800x1900x2200
CWNS2.1-95/70-YQ	2.1				天然气	8900	4100x2000x2400
CWNS2.8-95/70-YQ	2.8				轻油	11200	4400x2300x2600
CWNS3.5-95/70-YQ	3.5	0	85/60	96%	重油等	13200	5300x2400x2700
CWNS4.2-95/70-YQ	4.2		95/70		Natural Gas, Light Oil, Heavy Oil, etc.	14300	5600x2500x2800
CWNS5.6-95/70-YQ	5.6					19200	6800x2600x3000
CWNS7-95/70-YQ	7					23000	6300x2700x3200
CWNS10.5-95/70-YQ	10.5					35500	8700x3700x3500
CWNS14-95/70-YQ	14					42600	8050x3750x3950

生产基地: 中国河南太康锅炉产业园
Address: Boiler Industrial Zone, Taikang, Henan, China
website: www.yxboiler.com
E-mail: sales@yxboiler.com
WhatsApp: +86-13037600603

WNS型
一体式冷凝锅炉
热效率之王

WNS INTEGRATED CONDENSING BOILER



产品简介 PRODUCT INTRODUCTION

在国家倡导环保节能的政策下，永星依托多年的锅炉研发制造经验，生产出WNS型一体式冷凝锅炉。此锅炉与WNS型燃油燃气锅炉最大的不同在于它的表面配置有冷凝器。冷凝器的使用，使得锅炉的排烟温度降至60-80℃，通过吸收烟气中的部分热能，使得锅炉的热效率大大提高，达到了100.2%以上。同时，在能量回收的过程中，大大减少了有害气体的排放，减少了环境污染。此锅炉既节能，又环保，因此在食品、服装纺织、石油化工以及机械制造等行业得到广泛的应用。

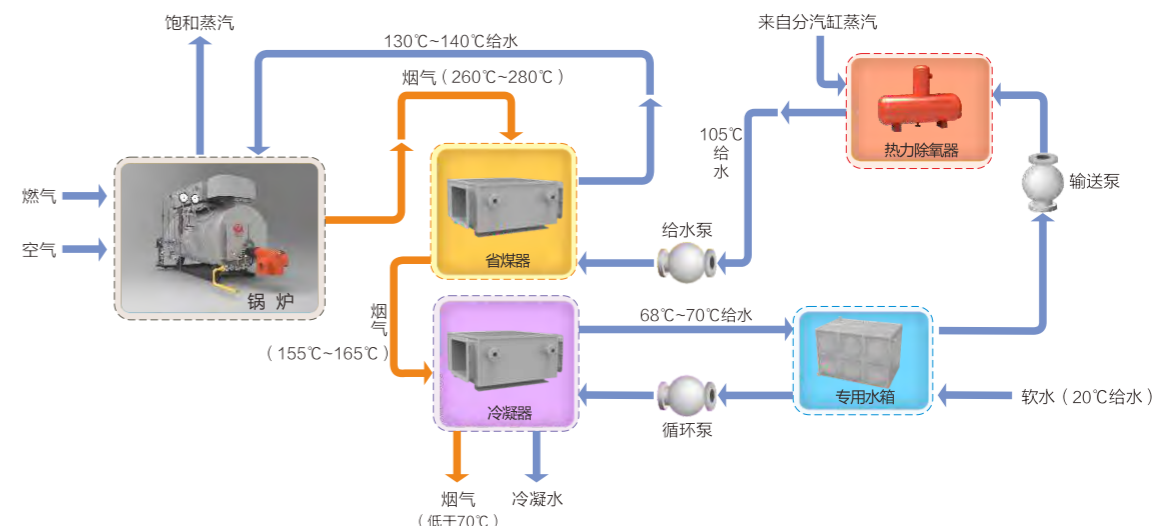
WNS型一体式冷凝锅炉主要由锅炉本体、燃烧器、仪表、连接烟道、冷凝器、水箱、给水泵、分汽缸、除氧器、循环泵、软水器等组成，具有燃烧清洁、排放无污染、操作便捷、出力充足、燃料燃烧充分、热效率高等特点，是目前最为节能高效、环保的产品，也是目前最为理想的一种加热设备。

Under the national policy of promoting environmental protection and energy conservation, based on years of experience in boiler R&D and manufacturing, Yongxing produces WNS integrated condensing boilers. Its surface is equipped with integrated condenser, which can decrease the exhaust temperature of the boiler to 60-80 °C, and absorbs part of the heat from flue gas, greatly improve the thermal efficiency of the boiler to more than 100.2%. Same time, it greatly reduces harmful gases discharge and environmental pollution under heat recovery processing. With characteristics of energy-efficient and environmentally friendly, it is widely used in food, apparel, textile, petrochemical and machinery manufacturing industries.

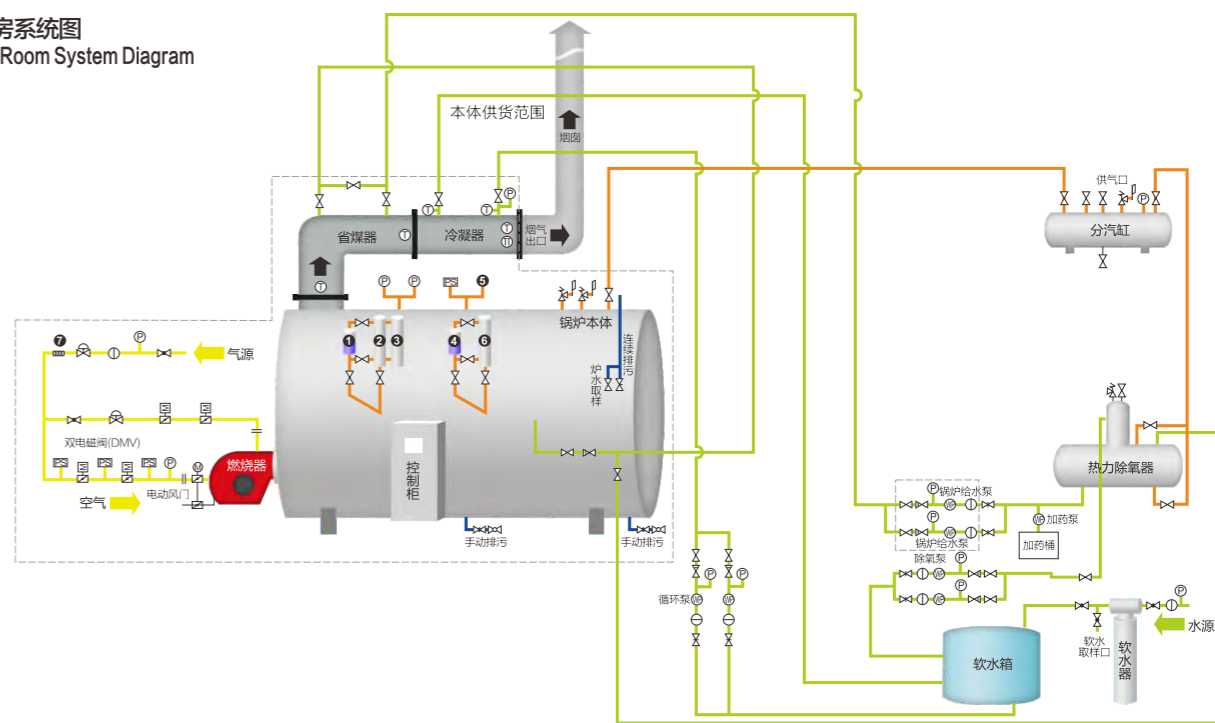
WNS integrated condensing boiler is mainly composed of boiler body, burner, instruments, connecting flue, condenser, water tank, feed water pump, steam header, deaerator, circulating pump, water softener, etc. With the features of clean combustion, pollution-free emission, convenient operation, sufficient output, sufficient combustion and high thermal efficiency, it is the most energy-saving, high-efficiency, environmentally-friendly and ideal heating device boiler product in recent years.

系统图 SYSTEM DIAGRAM

锅炉系统：除氧给水模式(105℃给水)
Boiler System: Deaerating Feed Mode (Water feeding at 105℃)



锅炉房系统图
Boiler Room System Diagram



阀门图例

① 过滤器	减压阀	闸阀
节流阀	球阀	截止阀或柱塞阀
气动蝶阀	止回阀或单向阀	压力控制器
电磁阀	弹簧安全阀	水泵
蝶阀	三通旋塞阀	排入大气
电动蝶阀	旋塞阀	

仪表标识说明

① 双色水位计	⑦ 波纹管
② 平衡筒	⑧ 压力表
③ 差压变送装置	⑨ 双金属温度计
④ 板式水位计	⑩ 温度变送器
⑤ 压力变送器	
⑥ 水位控制报警器	

其它图例

天然气管线/燃油管线
蒸汽管线
给水管线
排污、取样管线

备注：除氧给水模式适用于蒸发量 ≥ 6T 锅炉

生产基地：中国河南太康锅炉产业园
Address: Boiler Industrial Zone, Taikang, Henan, China
website: www.yxboiler.com
E-mail: sales@yxboiler.com
WhatsApp: +86-13037600603

YXBOILER.COM YXBOILER.COM YXBOILER.COM YXBOILER.COM YXBOILER.COM YXBOILER.COM

性能特点 PERFORMANCE CHARACTERISTICS

卧式全湿背结构，一体式设计，减少了占地面积。

Horizontal full wet back structure and integrated design, reducing floor space.

大炉膛、螺纹烟管的设计，增大了炉膛的吸热量，降低了能耗。

The design of the large furnace and the threaded pipe which increases the heat absorption of the furnace and reduces the energy consumption.

内置各种保护装置，如超温、超压、缺水等，保证了锅炉安全可靠地运行。

Various protection devices, such as over-temperature protection, over-pressure protection, water shortage protection, etc., ensuring the safe and reliable operation of boiler.

采用螺纹烟管和波形炉胆，加强了传热效果，节省了燃料。

It adopts threaded pipe and corrugated furnace to enhance the heat transfer and save fuel.

液晶屏显示工况，方便掌握锅炉及系统的运行状况。

LCD screen displays the working conditions, more convenient for mastering the operation condition of boiler system.

配有防爆门，泄压后自动回弹，确保锅炉的安全性。

Equipped with explosion-proof door, automatically rebound after pressure relief to ensure the safety of the boiler.

冷凝余热回收装置可以反复吸收锅炉排出的烟和汽，提高了能源利用率。

Condensing waste heat recovery device can repeatedly absorb the smoke and steam discharged from the boiler, improving energy utilization.

受热面结构设计合理，减小并控制了烟气阻力。

Reasonable heating surface design, controlling and reducing smoke resistance.

采用原装进口燃烧器，自动化程度高，从预吹扫、点火、火力自动转换到自动停炉及熄火保护，均可实现全自动控制。

Adopted original imported burner with high automation. Realized full automatic control of pre-purge, ignition, automatic conversion of fire power, automatic boiler shutdown and flameout protection.

炉顶布置两级冷凝器，冷凝器采用耐腐蚀的ND钢螺旋翅片管，大大增加受热面，降低锅炉排烟温度。

Arranged two-stage condenser on the top of the furnace, which is made of corrosion-resistant ND steel spiral finned tube, increasing the heating surface and reducing the exhaust gas temperature of the boiler.

生产基地: 中国河南太康锅炉产业园
Address: Boiler Industrial Zone, Taikang, Henan, China
website: www.yxboiler.com
E-mail: sales@yxboiler.com
WhatsApp: +86-13037600603

技术参数 TECHNICAL PARAMETERS

蒸汽锅炉 Steam Boiler

型号规格 Model	额定蒸发量 Rated Steam Capacity (t/h)	额定工作压力 Rated Working Pressure (MPa)	饱和蒸汽温度 Saturated Steam Temperature (°C)	锅炉热效率 Boiler Heat Efficiency (%)	设计燃料 Design Fuel	最大运输重量 Max Transport Weight (kg)	最大运输尺寸 Max Transport Dimension(LxWxH) (mm)
unit							
WNS1-1.25-YQ	1	0.7	171	100.2	天然气 轻油 重油等 Natural Gas, Light Oil, Heavy Oil, etc.	4800	3440x1900x2200
WNS2-1.25-YQ	2					7500	4073x2000x2450
WNS3-1.25-YQ	3	1.0	184			9000	4550x2000x3450
WNS4-1.25-YQ	4					12000	5200x2300x3300
WNS6-1.25-YQ	6	1.25	194			15198	4900x2938x3605
WNS8-1.25-YQ	8					19000	6330x2910x3150
WNS10-1.25-YQ	10	1.6	204			24372	6860x2808x3168
WNS12-1.25-YQ	12					27500	7100x3000x3200
WNS15-1.25-YQ	15	2.5	225			30000	7365x3200x3508
WNS20-1.25-YQ	20					39000	7800x3650x3960

承压热水锅炉 Pressure Bearing Hot Water Boiler

型号规格 Model	额定热功率 Rated Heat Power (MW)	额定工作压力 Rated Working Pressure (MPa)	额定出/回水温度 Rated Outlet/Return Temp (°C)	锅炉热效率 Boiler Heat Efficiency (%)	设计燃料 Design Fuel	最大运输重量 Max Transport Weight (kg)	最大外型尺寸 Max Dimension (mm)
unit							
WNS0.7-0.7/95/70-YQ	0.7	0.7	95/70	100.2	天然气 轻油 重油等 Natural Gas, Light Oil, Heavy Oil, etc.	4800	3200x1800x2000
WNS1.4-0.7/95/70-YQ	1.4					7200	3800x1900x2200
WNS2.1-1.0/95/70-YQ	2.1	1.0	115/70			10000	4100x2000x2400
WNS2.8-1.0/95/70-YQ	2.8					12400	4400x2300x2600
WNS3.5-1.0/95/70-YQ	3.5	1.0				14900	5300x2400x2700
WNS4.2-1.0/95/70-YQ	4.2					16000	5300x2400x2700
WNS5.6-1.0/95/70-YQ	5.6	1.0				21500	6800x2600x3000
WNS7-1.0/95/70-YQ	7					26000	6300x2700x3200
WNS10.5-1.0/95/70-YQ	10.5	1.0				40000	8700x3700x3500
WNS14-1.0/95/70-YQ	14					48600	8050x3750x3950

常压热水锅炉 Atmospheric Pressure Hot Water Boiler

型号规格 Model	额定热功率 Rated Heat Power (MW)	额定工作压力 Rated Working Pressure (MPa)	额定出/回水温度 Rated Outlet/Return Temp (°C)	锅炉热效率 Boiler Heat Efficiency (%)	设计燃料 Design Fuel	最大运输重量 Max Transport Weight (kg)	最大外型尺寸 Max Dimension (mm)
unit							
CWNS0.7-95/70-YQ	0.7	0	85/60	100.2	天然气 轻油 重油等 Natural Gas, Light Oil, Heavy Oil, etc.	4320	3200x1800x2000
CWNS1.4-95/70-YQ	1.4					6300	3800x1900x2200
CWNS2.1-95/70-YQ	2.1	0	95/70			8900	4100x2000x2400
CWNS2.8-95/70-YQ	2.8					11200	4400x2300x2600
CWNS3.5-95/70-YQ	3.5	0				13200	5300x2400x2700
CWNS4.2-95/70-YQ	4.2					14300	5600x2500x2800
CWNS5.6-95/70-YQ	5.6	0				19200	6800x2600x3000
CWNS7-95/70-YQ	7					23000	6300x2700x3200
CWNS10.5-95/70-YQ	10.5	0				35500	8700x3700x3500
CWNS14-95/70-YQ	14					42600	8050x3750x3950

• SZS型 •

燃油燃气锅炉
大容量的SZS
不仅仅是大

SZS OIL/GAS FIRED BOILER



产品简介 PRODUCT INTRODUCTION

SZS型燃油燃气锅炉是双锅筒纵置式室燃锅炉，由上下锅筒、膜式水冷壁、燃烧器、过热器、对流管束、冷凝器、除污器等组成。炉膛水冷壁以及对流烟道均采用膜式壁结构，降低了耐火砖的使用。再加上锅炉具有节能、高效、环保、安装周期短、全自动运行、操作简单、保护功能完善等优势，既可以满足工业供热所需，也可以满足小型发电站的供热需求，是目前市场上非常畅销的一款锅炉。

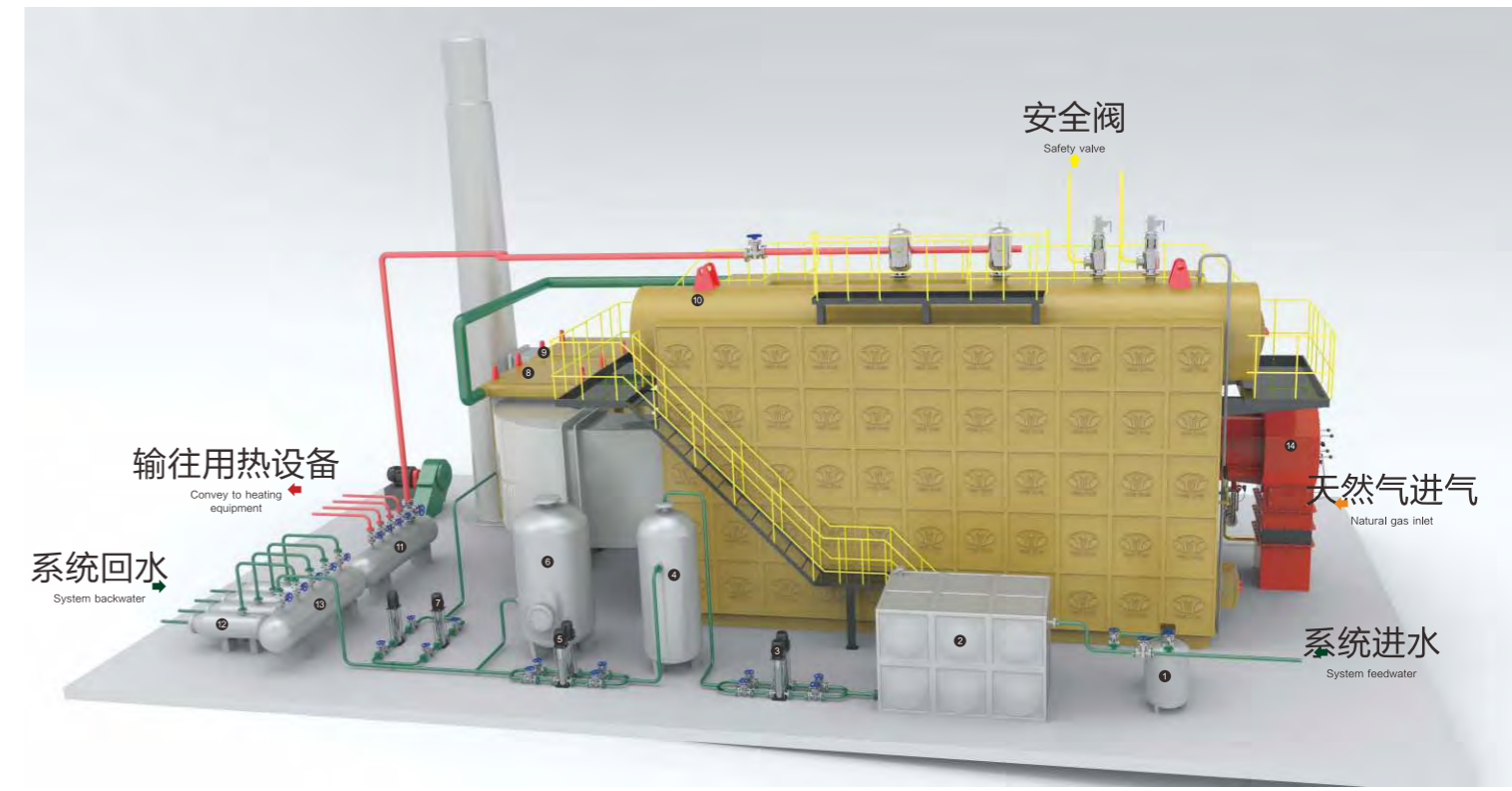
此锅炉为快组装或散装水管锅炉，左侧为对流管束，右侧为炉膛。加热过程中，炉膛燃烧产生的烟气从炉膛尾部的出烟口进入燃烬室、对流管束区，然后再转向由翅片管做成的节能器和冷凝器中，最后再通过烟道、烟囱排入大气。其中，节能器和冷凝器的应用，既降低了排烟温度，提高了热效率，同时也减少了燃料的消耗。

SZS gas/oil double-drum horizontal type chamber combustion boiler, which consists of upper and lower drums, membrane water wall, burner, superheater, convection pipe bundle, condenser and dirt separator, etc. Its furnace water wall and convection flue adopts membrane wall structure, saving refractory bricks. In addition, with the advantages of energy-saving, high efficient, environmentally friendly, short installation cycle, simple operation and perfect protection, etc, it can meet the needs of industrial heating and small power station supply heating, now becoming one popular boiler type on the market.

It is quick-assembled or bulk water tube boiler with convection tube bundle on the left and chamber on the right. During the heating process, the flue gas which is produced by the chamber combustion, enters to burning chamber and convection pipe bundle from smoke outlet of end of furnace, then turns to the economizer and condenser which made by finned tubes, and finally discharges into the air through he flue and chimney. The application of the economizer and condenser reduces the exhaust gas temperature and improves the thermal efficiency, reducing fuel consumption.

系统图 SYSTEM DIAGRAM

- 水管道 Water pipe
- 热水管道 Hot water pipe
- 天然气管道 Natural gas pipe
- 安全阀放散管道 Safety valve relief pipe



- | | | | |
|---------|------------------|-------|-------------------|
| ① 软水器 | Softener | ⑧ 节能器 | Economizer |
| ② 水箱 | Water tank | ⑨ 冷凝器 | Condenser |
| ③ 除氧泵 | Deaerator pump | ⑩ 锅炉 | Boiler |
| ④ 解吸除氧器 | Deaerator | ⑪ 分水缸 | Water distributor |
| ⑤ 补水泵 | Feedwater Pump | ⑫ 除污器 | Dirt separator |
| ⑥ 膨胀器 | Expander | ⑬ 回水缸 | Backwater tank |
| ⑦ 循环泵 | Circulating pump | ⑭ 燃烧器 | Burner |

生产基地: 中国河南太康锅炉产业园
Address: Boiler Industrial Zone, Taikang, Henan, China
website: www.yxboiler.com
E-mail: sales@yxboiler.com
WhatsApp: +86-13037600603

性能特点 PERFORMANCE CHARACTERISTICS

双锅筒、纵置式、D型布置的自然循环型结构，容量大。

Natural circulation structure with double drum, vertical type and D-type layout, with large capacity.

保温层主要为硅酸铝纤维，具有保温性能好、重量轻等优点。

The insulation layer is mainly aluminum silicate fiber, which has the advantages of good insulation performance and light weight.

锅炉尾部配置节能器，有效降低排烟温度，提高节能效果。

The boiler tail is equipped with economizer to effectively reduce the exhaust gas temperature and improve the energy saving effect.

锅炉尾部设置防爆门，有效确保锅炉的安全性。

Equipped with explosion-proof door in boiler tail to effectively ensure the safety of the boiler.

燃烧器采用意大利百得进口燃烧器，自动化程度高，从预吹扫、点火、火力自动转换到自动停炉及熄火保护，均可实现全自动控制。

Adopted original imported Italy Baltur burner with high automation. Realized full automatic control of pre-purge, ignition, automatic conversion of fire power, automatic boiler shutdown and flameout protection.

自控系统采用可编程序控制，具备较完善的控制功能，包括：给水自动控制、燃烧的自动调节、油温自动控制（油燃料）、蒸汽超压保护、气压高低保护（气体燃料）、检漏（气体燃料）、前后吹扫、熄火保护以及相应的联锁及安全保护等。

The automatic control system adopts programmable control, with relatively perfect control functions, including: automatic control of water supply, automatic adjustment of combustion, automatic control of oil temperature (oil fuel), steam overpressure protection, high and low pressure protection (gas fuel), leakage detection (gas fuel), front and rear purging, flameout protection, corresponding interlocking and safety protection, etc.

配备有水位计、水位控制报警器、压力表、电接点压力表、压力控制器以及气路、水路流量计；具有高、低水位报警和低水位联锁保护、超压报警及超压联锁保护功能，可以有效地监视、控制水位及压力。

Equipped with water level gauge, water level control alarm, pressure gauge, electric contact pressure gauge, pressure controller and gas and water flow meters, with high and low water level alarm, low water level interlock protection, over-pressure alarm and over-pressure interlock protection functions, effectively monitor and control water level and pressure.

前后墙全部采用膜式水冷壁结构，有效延长使用寿命。

Adopted Membrane water-cooled wall structure of front and rear walls, effectively extending service life.

技术参数 TECHNICAL PARAMETERS

蒸汽锅炉 Steam Boiler

型号规格 Model	额定蒸发量 Rated Steam Capacity (t/h)	额定工作压力 Rated Working Pressure (MPa)	饱和蒸汽温度 Saturated Steam Temperature (°C)	热效率 Heat Efficiency (%)	设计燃料 Design Fuel	最大运输重量 Max Transport Weight (kg)	最大运输尺寸 Max Transport Dimension(LxWxH) (mm)		
unit									
SZS6-1.25-YQ	6	1.25	194	96-98	天然气 轻油 重油等 Natural Gas, Light Oil, Heavy Oil, etc.	32000	7800X3400X3400		
SZS8-1.25-YQ	8					32000	7800X3400X3400		
SZS10-1.25-YQ	10					32000	7800X3400X3400		
SZS20-1.25-YQ	20					40000	8000X3600X4500		
SZS30-1.25-YQ	30					40000	8000X3600X4500		
SZS40-1.25-YQ	40					51000	8000X3600X4500		
SZS50-1.25-YQ	50					2.5	225	51000	8900X3900X4000
SZS65-1.25-YQ	65					3.82	245	68200	10500X4300X4320
SZS75-1.25-YQ	75							80500	12330X4400X4530
SZS100-1.25-YQ	100								
SZS110-1.25-YQ	110								
SZS150-1.25-YQ	150								
						以图纸为准	以图纸为准		

承压热水锅炉 Pressure Bearing Hot Water Boiler

型号规格 Model And Specification	额定热功率 Rated Heat Power (MW)	额定工作压力 Rated Working Pressure (MPa)	额定出/回水温度 Rated Outlet/Return Temp (°C)	热效率 Heat Efficiency (%)	设计燃料 Design Fuel	最大运输重量 Max Transport Weight (kg)	最大外型尺寸 Max Dimension (mm)
unit							
SZS7-1.0/115/70-YQ	7	1.0	115/70	96-98	天然气 轻油 重油等 Natural Gas, Light Oil, Heavy Oil, etc.	40000	8000X3600X4500
SZS10.5-1.0/115/70-YQ	10.5					48000	8850X3850X3930
SZS14-1.0/115/70-YQ	14					52500	8510X3850X3750
SZS17.5-1.0/115/70-YQ	17.5					57500	9310X3770X3750
SZS21-1.0/115/70-YQ	21					65000	10100X4130X4150
SZS24.5-1.0/115/70-YQ	24.5						
SZS28-1.0/115/70-YQ	28						
SZS31.5-1.0/115/70-YQ	31.5						
SZS35-1.0/115/70-YQ	35						

过热蒸汽锅炉 Super Steam Boiler

型号规格 Model	额定蒸发量 Rated Steam Capacity (t/h)	额定工作压力 Rated Working Pressure (MPa)	额定蒸汽温度 Rated Steam Temperature (°C)	热效率 Heat Efficiency (%)	设计燃料 Design Fuel
unit					
SZS-6-2.5-YQ	6	1.6	350	>96	天然气 轻油 重油等 Natural Gas, Light Oil, Heavy Oil, etc.
SZS-10-2.5-YQ	10				
SZS-15-2.5-YQ	15				
SZS-20-2.5-YQ	20				
SZS-25-2.5-YQ	25				
SZS-30-2.5-YQ	30	2.5	400		
SZS-35-2.5-YQ	35				
SZS-40-2.5-YQ	40				
SZS-50-2.5-YQ	50	3.82	450		
			500		

生产基地：中国河南太康锅炉产业园
Address: Boiler Industrial Zone, Taikang, Henan, China
website: www.yxboiler.com
E-mail: sales@yxboiler.com
WhatsApp: +86-13037600603

YXBOILER.COM YXBOILER.COM YXBOILER.COM YXBOILER.COM YXBOILER.COM YXBOILER.COM

·ZZJ/ZLJ型·

冷凝真空热水锅炉
安全可靠寿命长

ZZJ/ZLJ CONDENSING VACUUM
HOT WATER BOILER



产品简介 PRODUCT INTRODUCTION

真空热水锅炉，它通过预抽真空，使内部形成一个密闭的真空环境，随后在机体内填充热媒水。热媒水通过加热产生负压蒸汽，负压蒸汽凝结产生的热量将换热管内的冷水加热，进而不断的为用户提供热水。在锅炉运行的过程中，炉水只封闭在真空室内，在传热管和热交换器之间进行热量的传递。因此锅炉具有安装、保养方便、环保节能等特点，而在市场上广为流行。

真空热水锅炉和其他普通锅炉一样，下部都是由燃烧室和传热管组成，唯一不同的是，真空热水锅炉的上部为真空汽室，其中插入了U型管或直型管热交换器。它是在负压状态下运行的，绝对安全。同时，它还可以一机多用，可以同一时段为客户提供不同温度、不同用途的热水，满足客户多种需要，减少客户锅炉成本的投入。

Vacuum hot water boiler forms a closed vacuum environment inside by pre-vacuuming, then filling heat medium water into boiler. It generates negative pressure steam by heating, the heat generated by the condensation of negative pressure steam heats the cold water in the heat exchange tube, thereby continuously providing hot water to the user. During the operation, the heat medium water is only enclosed in the vacuum chamber, and heat is transferred between the heat transfer tubes and the heat exchanger. Therefore, the boiler has the characteristics of convenient installation, maintenance, environmental protection and energy saving, and is widely popular in the market.

Same with other common boilers, the lower part of vacuum hot water boiler is composed of a combustion chamber and heat transfer tube. The only difference is that the upper part of the vacuum hot water boiler is vacuum steam chamber, and inside is one U-tube or a straight tube type heat exchange. It is operated under negative pressure, so absolutely safe. It can also be used in many ways, such as providing customers with different temperatures and different usage of hot water at the same time, meeting various needs of customers and reduce the cost of boiler.

系统图 SYSTEM DIAGRAM

— 出水管道
Outlet Pipeline
— 回水管道
Inlet Pipeline



设备名称 Equipment Name

- ① 锅炉 Boiler
- ② 水箱 Water Tank
- ③ 节能器 Economizer
- ④ 冷凝器 Condenser
- ⑤ 膨胀器 Expander
- ⑥ 循环泵 Circulation Pump
- ⑦ 补水泵 Water Filling Pump
- ⑧ 燃烧器 Burner
- ⑨ 软水器 Water Softener
- ⑩ 分水缸 Water Separating Header
- ⑪ 除污器 Dirt Separator
- ⑫ 回水缸 Water Return Header

生产基地: 中国河南太康锅炉产业园
Address: Boiler Industrial Zone, Taikang, Henan, China
website: www.yxboiler.com
E-mail: sales@yxboiler.com
WhatsApp: +86-13037600603

YXBOILER.COM YXBOILER.COM YXBOILER.COM YXBOILER.COM YXBOILER.COM YXBOILER.COM

性能特点 PERFORMANCE CHARACTERISTICS

独特的脉冲水位检测电路结构，性能可靠。

Unique pulse water level detection with reliable performance.

换热器采用优质的304不锈钢制作，耐腐蚀。

The heat exchanger is made of high quality 304 stainless steel with corrosion resistance.

锅炉的用途多，一个锅炉可以配置多个换热器，可以供应不同温度、不同用途的热水。

The boiler boiler can be equipped with multiple heat exchangers to supply hot water of different temperatures and uses.

真空热水锅炉结构紧凑，体积小，节约占地面积。

The vacuum hot water boiler has compact structure and small volume, saving floor space.

热煤水在封闭的空间进行循环，损耗小。

Hot water is circulated in a closed space with low loss.

控制部分选用先进控制器，可以自动检测炉水温度，出水温度。

Adopted advanced controller, which can automatically detect the temperature of boiler water and outlet water.

真空热水锅炉采用两回程结构、真空负压，内置换热器结构，摒弃了传统耐火隔热材料，降低了机组前烟室温度。

Adopted two-return structure, vacuum negative pressure and internal heat exchanger structure, vacuum hot water boiler eliminates the traditional refractory insulation material, reducing the temperature of the front chamber.

热煤水是经软化、除污等特殊处理的高纯水，因此，真空热水锅炉内部不结垢，不腐蚀，增加了使用寿命。

Hot water is high-purity water specially treated by softening, decontaminating, etc. Therefore, the inside of the vacuum hot water boiler does not scale or corrode, increasing the service life.

技术参数 TECHNICAL PARAMETERS

ZZJ型冷凝真空热水锅炉 ZZJ Condensing Vacuum Hot Water Boiler

型号规格 Model	额定功率 Rated Power	调节方式 Adjust Way	燃烧方式 Combustion Way	设计热效率 Design Heat Efficiency	设计燃料 Design Fuel	最大运输重量 Max Transport Weight	最大运输尺寸 Max Transport Dimension(LxWxH)
unit	(kW)			(%)		(kg)	(mm)
ZZJ30	350	全自动 两段火调节 Fully automatic regulation with two-stages fire	微正压室燃 Micro-positive pressure chamber combustion	95.5	天然气 轻油 重油等 Natural Gas, Light Oil, Heavy Oil, etc.	2900	3600X1150X1900
ZZJ60	700					4000	4100X1400X2200
ZZJ90	1050					5300	4500X1500X2300
ZZJ120	1400					6400	4800X1600X2400
ZZJ180	2100					7600	5600X1700X2500
ZZJ240	2800					11000	6100X1850X2700

ZLJ型冷凝真空热水锅炉 ZLJ Condensing Vacuum Hot Water Boiler

型号规格 Model	额定功率 Rated Power	调节方式 Adjust Way	燃烧方式 Combustion Way	设计热效率 Design Heat Efficiency	设计燃料 Design Fuel	最大运输重量 Max Transport Weight	最大运输尺寸 Max Transport Dimension(LxWxH)
unit	(kW)			(%)		(kg)	(mm)
ZLJ300	3500	全自动 比例调节 Full-Automatic Ratio Adjustment	微正压室燃 Micro-Positive Pressure Chamber Combustion	95.5	天然气 轻油 重油等 Natural Gas, Light Oil, Heavy Oil, etc.	14000	6900X1900X2850
ZLJ360	4200					24000	7300X2000X2950
ZLJ480	5600					30000	8000X2150X3050
ZLJ600	7000					35000	8450X2300X3250
ZLJ720	8400					44000	8750X2400X3350
ZLJ900	10500					51000	9150X2400X3350
ZLJ1200	14000	62000	9950X2800X3800				

生产基地: 中国河南太康锅炉产业园
Address: Boiler Industrial Zone, Taikang, Henan, China
website: www.yxboiler.com
E-mail: sales@yxboiler.com
WhatsApp: +86-13037600603

YXBOILER.COM YXBOILER.COM YXBOILER.COM YXBOILER.COM YXBOILER.COM

· WDR型 ·

电加热锅炉
NO_x零排放 更环保
煤改电推荐产品

WDR ELECTRIC HEATING BOILER



产品简介 PRODUCT INTRODUCTION

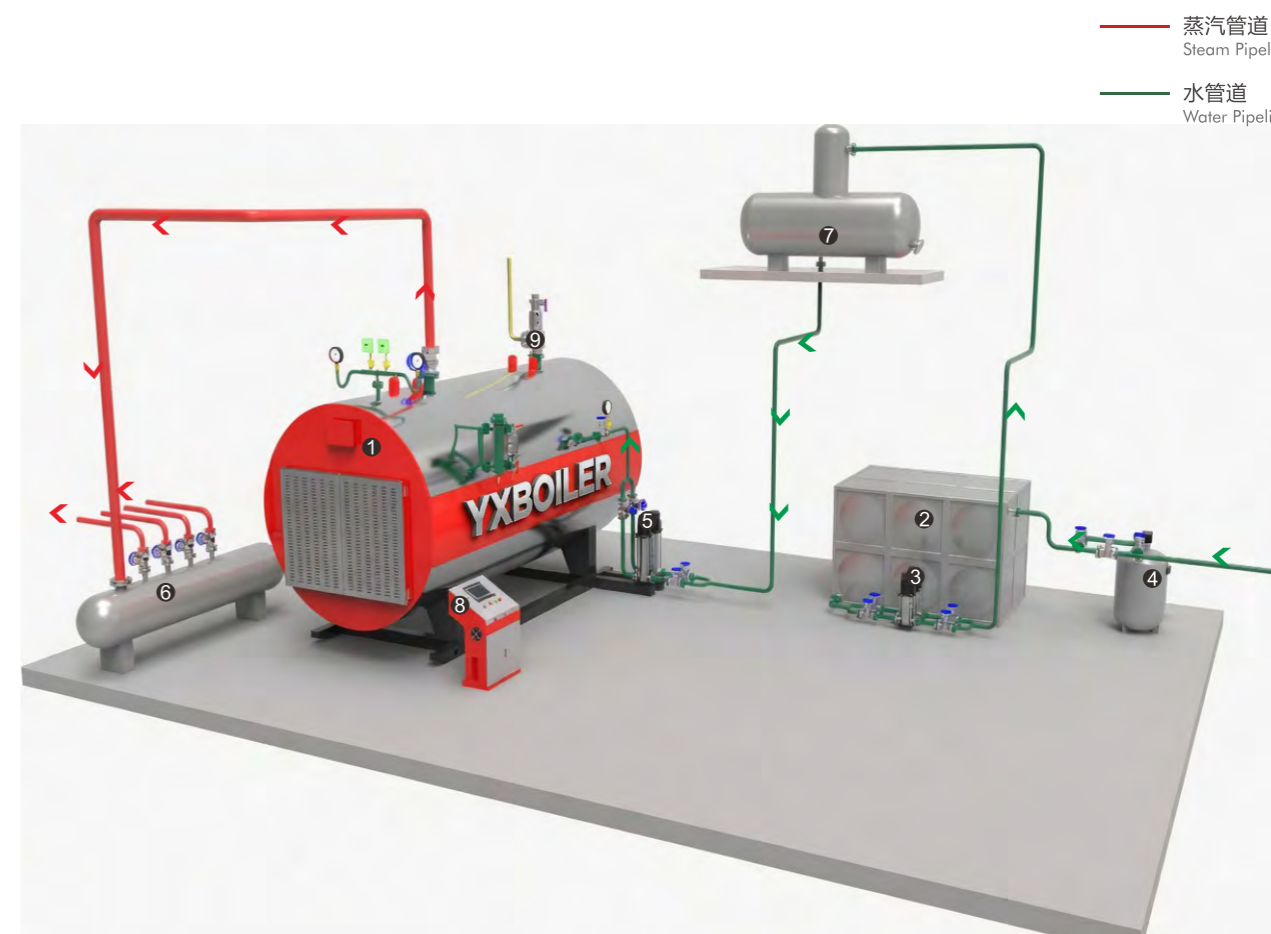
WDR型电加热锅炉是永星特种设备集团推出的一款以电力为能源的卧式加热锅炉，主要包含电加热蒸汽锅炉、电加热常压热水锅炉和电加热承压热水锅炉。它采用电力作为加热能源，工作过程中不会产生废气、废渣、废料等，既改善了工人的工作环境，也符合国家的环保政策要求，是一款非常迎合客户需求的锅炉。与其他锅炉相比，它还具有噪音小、运行稳定、操作方便、热效率高等特点。

WDR型电加热锅炉采用炉体电控制柜分离方式，避免了元件受热老化产生的问题，提高了使用寿命。锅炉本体采用锅炉钢板，纵、环焊缝均为自动焊，并进行X射线探伤既确保了锅炉的质量，也提高了外观的美观度。除此之外，它还可以自动检测循环泵，可以根据出水温度来控制循环泵的启动或关闭，以此来满足日常工作的要求。

WDR type electric heating boiler is a horizontal heating boiler taking electricity as power source introduced by Yongxing boiler group, mainly including electric heating steam boiler, electric heating atmospheric pressure hot water boiler and electric heating pressure hot water boiler. It uses electricity as heating energy, and will not produce waste gas, waste residue, waste, etc in the working process. It not only improves the working environment of workers, but also meets the requirements of the national environmental protection policy, is a kind of boiler that meets customers' requirements. Compared with other boilers, it also has the characteristics of small noise, stable operation, convenient operation and high thermal efficiency, etc.

WDR type electric heating boiler adopts the separation method of electric control cabinet and furnace body, which avoids the problem of aging of components because of heating and improves the service life. The boiler body adopts boiler steel plate, both longitudinal and girth welds are automatically welded, and X-ray inspection is carried out, which not only ensures the quality of the boiler, but also improves the aesthetic appearance. In addition, it can also automatically track and detect the circulating pump, and control the starting or closing of the circulating pump according to the outlet water temperature to meet the requirements of daily work.

系统图 SYSTEM DIAGRAM



设备名称 Equipment Name

- | | |
|-----------------------|--------------------------------|
| ① 锅炉 Boiler | ⑥ 分汽缸 Steam Header |
| ② 水箱 Water Tank | ⑦ 除氧器 Deaerator |
| ③ 除氧泵 Deaerator Pump | ⑧ 控制柜 Electric Control Cabinet |
| ④ 软水器 Water Softener | ⑨ 安全阀 Safety Valve |
| ⑤ 给水泵 Feed Water Pump | |

生产基地: 中国河南太康锅炉产业园
Address: Boiler Industrial Zone, Taikang, Henan, China
website: www.yxboiler.com
E-mail: sales@yxboiler.com
WhatsApp: +86-13037600603

性能特点 PERFORMANCE CHARACTERISTICS

锅炉本体采用优质保温材料做保温，散热损耗小，减少了能源消耗。

The boiler body adopts high-quality thermal insulation materials for thermal insulation, with low heat dissipation loss, reducing energy consumption.

炉体与电控制装置完美组合，实现了机电一体化，减少了占用空间。

Perfect combination of furnace and electric control device, realizing electromechanical integration and reducing space occupation.

电加热管与炉体采用法兰连接，便于拆装，维护保养也非常方便。

The electric heating tube and furnace body are connected with flanges, which is convenient for disassembly & installation and maintenance.

具备自动记忆故障功能，方便查看维修。

With the function of automatic memory fault, convenient for checking and maintenance.

控制器采用数字液晶显示屏，全中文显示，图形化的运行界面，用户可直接通过显示屏查看设备运行参数。

The controller adopts the digital LCD screen, which is displayed in all Chinese and has a graphical operation interface. Users can directly view the operation parameters of the equipment through the screen.

锅炉采用逐级加载或减载设计，有效的保护了加热元件，减小了对电网的冲击，延长了使用寿命。

The boiler adopts the design of progressive loading or load reduction, which effectively protects the heating element, reduces the impact on the power grid and extends the service life.

加热装置选用表面负荷比金属加热管低数倍的陶瓷电加热管，延长了使用寿命，提高了热效率，高达99%。

The heating device selects ceramic electric heating tube whose surface load is several times lower than metal heating tube, which extends service life and improves thermal efficiency by up to 99%.

可根据需求，一天设置多个不同的工作时段。

Multiple different working time periods can be set in a day according to needs.

技术参数 TECHNICAL PARAMETERS

蒸汽锅炉 Steam Boiler

型号规格 Model	额定蒸发量 Rated Steam Capacity (t/h)	额定工作压力 Rated Working Pressure (MPa)	饱和蒸汽温度 Saturated Steam Temperature (°C)	热效率 Heat Efficiency (%)	设计燃料 Design Fuel	最大运输重量 Max Transport Weight (kg)	最大运输尺寸 Max Transport Dimension(LxWxH) (mm)
unit							
WDR0.3-0.7	0.3				电能 Electricity	950	2200X1300X1400
WDR0.5-0.7	0.5			1500		2400X1400X1600	
WDR0.7-0.7	0.7			1700		2500X1500X1600	
WDR1.0-0.7	1	0.7	171	1850		2600X1500X1900	
WDR1.0-1.0	1	1.0	184	1850		2600X1500X1900	
WDR2.0-0.7	2	1.25	194	3000		3100X1700X2300	
WDR2.0-1.0	2	1.6	205	3000		3100X1700X2300	
WDR2.0-1.25	2	2.5	225	3100		3100X1700X2300	
WDR2.0-1.6	2			3250		3100X1700X2300	
WDR2.0-2.5	2			3360		3100X1700X2300	
WDR4.0-1.25	4			6800	4200X2000X2300		

承压热水锅炉 Pressure Bearing Hot Water Boiler

型号规格 Model	额定热功率 Rated Heat Power (MW)	额定工作压力 Rated Working Pressure (MPa)	额定出/回水温度 Rated Outlet/Return Temp (°C)	热效率 Heat Efficiency (%)	设计燃料 Design Fuel	最大运输重量 Max Transport Weight (kg)	最大运输尺寸 Max Transport Dimension(LxWxH) (mm)
unit							
WDR0.24-0.7/95/70	0.24				电能 Electricity	950	2200X1300X1400
WDR0.35-0.7/95/70	0.35			1500		2400X1400X1600	
WDR0.48-0.7/95/70	0.48			1700		2500X1500X1600	
WDR0.70-0.7/95/70	0.7	0.7	95/70	1850		2600X1500X1900	
WDR1.05-0.7/95/70	1.05	1.0	115/70	2550		2800x1600X2000	
WDR1.4-0.7/95/70	1.4			3100		3100X1700X2300	
WDR2.8-0.7/95/70	2.8			6800		4200X2000X2300	

常压热水锅炉 Atmospheric Pressure Hot Water Boiler

型号规格 Model	额定热功率 Rated Heat Power (MW)	额定工作压力 Rated Working Pressure (MPa)	额定出/回水温度 Rated Outlet/Return Temp (°C)	热效率 Heat Efficiency (%)	设计燃料 Design Fuel	最大运输重量 Max Transport Weight (kg)	最大运输尺寸 Max Transport Dimension(LxWxH) (mm)
unit							
CWDR0.24-95/70	0.24				电能 Electricity	855	2200X1300X1400
CWDR0.35-95/70	0.35			1350		2400X1400X1600	
CWDR0.48-95/70	0.48	0	85/60	1530		2500X1500X1600	
CWDR0.70-95/70	0.7		95/70	1670		2600X1500X1900	
CWDR1.05-95/70	1.05			2330		2800x1600X2000	
CWDR1.4-95/70	1.4			2800		3100X1700X2300	
CWDR2.8-95/70	2.8			6150		4200X2000X2300	

生产基地: 中国河南太康锅炉产业园
Address: Boiler Industrial Zone, Taikang, Henan, China
website: www.yxboiler.com
E-mail: sales@yxboiler.com
WhatsApp: +86-13037600603

YXBOILER.COM YXBOILER.COM YXBOILER.COM YXBOILER.COM YXBOILER.COM YXBOILER.COM

· DZH型 ·

生物质(燃煤)锅炉
热能好帮手
中国好锅炉

DZH MANUALLY BIOMASS (COAL) FIRED BOILER



产品简介 PRODUCT INTRODUCTION

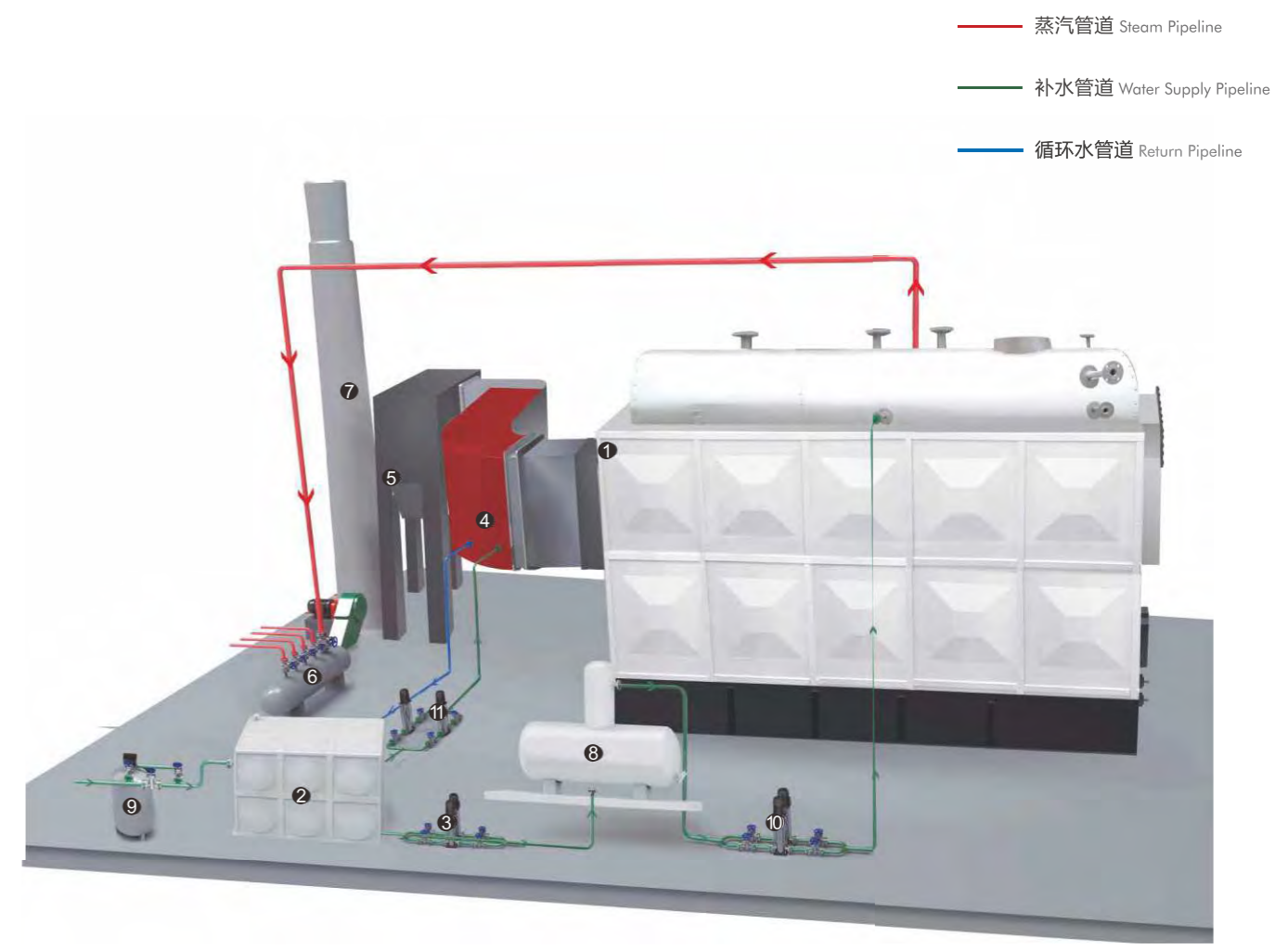
DZH型活动炉排生物质锅炉是一种单锅筒纵置式生物质锅炉，是我公司为响应环保政策而研发的新产品。它采用秸秆、锯末、花生壳等农作物废弃物加工制成的生物质颗粒为燃料，烟气的硫化物排放量较燃煤锅炉大大减少，符合国家环保的标准。更好的是农作物废弃物随处可见，不仅变废为宝，实现了能源的再利用，而且价格低廉，达到了社会效益和经济效益的双重统一。

此锅炉是一种卧式三回程水火管式锅炉，采用新型的炉膛设计，最大程度的促进了燃料的燃烧，使热效率达到了83%。燃料燃烧后，烟气经受热面、省煤器、空气预热器等进入除尘器，最后再由烟肉排入大气。燃烧后的少量灰渣落入排渣口，作为农作物生长所需要的农家肥使用。

DZH series moving grate biomass fired boiler, which is developed by Yongxing in response to environmental protection policy, is a new single-drum horizontal type boiler. It uses biomass pellets processed from crop waste such as straw, sawdust and peanut shells as fuel. The emission of sulfide in flue gas is much less than that of coal-fired boiler, which meets the national environmental protection standards. The crop waste can be got everywhere, not only changing waste into treasure and realizing the reuse of energy, but also achieving the dual unity of social and economic benefits with low cost.

It is horizontal three-returns water-fire tube boiler with a new furnace design, which greatly promotes fuel combustion and achieve the thermal efficiency to 83%. After fuel combustion, the flue gas enters the dust remover through the hot surface, economizer, air preheater, etc., and finally is discharged into the atmosphere through the chimney. The remaining small amount of ash after burning falls into the slag discharge hole as farmyard fertilizer.

系统图 SYSTEM DIAGRAM



— 蒸汽管道 Steam Pipeline
— 补水管道 Water Supply Pipeline
— 循环水管道 Return Pipeline

设备名称 Equipment Name

- ① 锅炉 Boiler
- ⑥ 分水缸 Water Separating Header
- ⑪ 节能泵 Energy-Saving Pump
- ② 水箱 Water Tank
- ⑦ 烟囱 Chimney
- ③ 除氧泵 Deaerator Pump
- ⑧ 除氧器 Deaerator
- ④ 节能器 Economizer
- ⑨ 软水器 Water Softener
- ⑤ 旋风除尘器 Cyclone Dust Remover
- ⑩ 给水泵 Feed Water Pump

生产基地: 中国河南太康锅炉产业园
Address: Boiler Industrial Zone, Taikang, Henan, China
website: www.yxboiler.com
E-mail: sales@yxboiler.com
WhatsApp: +86-13037600603

YXBOILER.COM YXBOILER.COM YXBOILER.COM YXBOILER.COM YXBOILER.COM

性能特点 PERFORMANCE CHARACTERISTICS

采用拱型管板与螺纹烟管组成锅筒，使锅筒由准刚性体变为准弹性体结构，取消了管板区的拉撑件，减少了应力。管板内烟管由两回程改为单回程，解决了管板裂纹的难题。

Drum is made up of arched tubesheet and threaded smoke pipe, which makes the drum change from quasi steel to quasi elastic structure, cancels the brace in tubesheet area and reduces the stress. The smoke pipe in the tube sheet is changed from two return routes to one return route, which solves the problem of crack in the tube sheet.

锅筒下部由于布置了上升管排，消除了锅筒底部的死水区，使泥渣不易沉积，锅筒高温区能得到良好的冷却，预防了锅筒下部鼓包。

The arrangement of rising pipe row at the bottom of the drum eliminates the dead water area of the bottom of the drum, so that the sludge is not easy to deposit, the high temperature area of the drum can be well cooled, and the bulge at the bottom of the drum can be prevented.

采用高效传热螺纹烟管，获得了强化传热效果，达到锅炉升温、升压快的特点，提高了锅炉的热效率。

High-efficiency heat transfer threaded flue gas pipe is adopted to enhance the heat transfer effect, achieving the characteristics of fast temperature rise and pressure rise of the boiler and improving the thermal efficiency of the boiler.

结构紧凑，与同类型锅炉比较，外形尺寸小，节省锅炉房基建投资。

Compact structure, smaller size, saving infrastructure investment of boiler house.

运行稳定、调整方便、出力足。

Stable operation, convenient adjustment and sufficient output.

采用螺纹烟管强化传热，提高了传热系数和热效率，由于烟气在管内有扰动作用，烟管内不易积灰，可以起到自清扫的作用。

The heat transfer coefficient and thermal efficiency are improved by using threaded smoke pipe. Because the flue gas has the disturbance effect in the pipe, it is not easy to accumulate ash in the flue gas pipe, which plays the role of self cleaning.

炉膛内的八字墙、出口烟窗部分均有一定降尘作用，使锅炉的原始排尘浓度控制在标准以下，保证了锅炉烟尘排放达到国家环保规定的指标。

The splayed wall and outlet smoke window in the furnace have certain dust reduction effect. The original dust concentration of the boiler is controlled below the standard, which ensures that the smoke emission of the boiler meets the national environmental protection requirements.

技术参数 TECHNICAL PARAMETERS

蒸汽锅炉 Steam Boiler

型号规格 Model	额定蒸发量 Rated Steam Capacity (t/h)	额定工作压力 Rated Working Pressure (MPa)	饱和蒸汽温度 Saturated Steam Temperature (°C)	热效率 Heat Efficiency (%)	设计燃料 Design Fuel	最大运输重量 Max Transport Weight (kg)	最大运输尺寸 Max Transport Dimension(LxWxH) (mm)
DZH0.5-1.25-SCII	0.5	1.25	194	84.6	煤 生物质 燃料 Coal Biomass Fuel	9000	3300x2000x2656
DZH1-1.25-SCII	1			84.34		13000	4500x1800x2800
DZH2-1.25-SCII	2			84.98		21000	4900x1900x3255
DZH3-1.25-SCII	3			84.99		23000	5200x2000x3300
DZH4-1.25-SCII	4			85.51		24500	5830x2150x3480
DZH6-1.25-SCII	6			85.37		26000	7740x3770x3440

承压热水锅炉 Pressure Bearing Hot Water Boiler

型号规格 Model	额定热功率 Rated Heat Power (MW)	额定工作压力 Rated Working Pressure (MPa)	额定出/回水温度 Rated Outlet/Return Temp (°C)	热效率 Heat Efficiency (%)	设计燃料 Design Fuel	最大运输重量 Max Transport Weight (kg)	最大外型尺寸 Max Dimension (mm)
DZH0.35-1.0/115/70-SCII	0.35	1.0	115/70	84	煤 生物质 燃料 Coal Biomass Fuel	9000	3300x2000x2656
DZH0.7-1.0/115/70-SCII	0.7					13000	4820x2150x2960
DZH1.4-1.0/115/70-SCII	1.4					25000	5280x2380x3030
DZH2.1-1.0/115/70-SCII	2.1					26000	5500x2420x3250
DZH2.8-1.0/115/70-SCII	2.8					28000	6000x2500x3400
DZH4.2-1.0/115/70-SCII	4.2					30000	7200x2600x3800

常压热水锅炉 Atmospheric Pressure Hot Water Boiler

型号规格 Model	额定热功率 Rated Heat Power (MW)	额定工作压力 Rated Working Pressure (MPa)	额定出/回水温度 Rated Outlet/Return Temp (°C)	热效率 Heat Efficiency (%)	设计燃料 Design Fuel	最大运输重量 Max Transport Weight (kg)	最大外型尺寸 Max Dimension (mm)
CDZH0.35-85/60-SCII	0.35	0	85/60	84	煤 生物质 燃料 Coal Biomass Fuel	9000	3300x2000x2656
CDZH0.7-85/60-SCII	0.7					13000	4820x2150x2960
CDZH1.4-85/60-SCII	1.4					25000	5280x2380x3030
CDZH2.1-85/60-SCII	2.1					26000	5500x2420x3250
CDZH2.8-85/60-SCII	2.8					28000	6000x2500x3400
CDZH4.2-85/60-SCII	4.2					30000	7200x2600x3800

生产基地: 中国河南太康锅炉产业园
Address: Boiler Industrial Zone, Taikang, Henan, China
website: www.yxboiler.com
E-mail: sales@yxboiler.com
WhatsApp: +86-13037600603

· DZL型 ·

生物质(燃煤)锅炉
超级节能
确实省钱

DZL BIOMASS (COAL) FIRED BOILER



产品简介 PRODUCT INTRODUCTION

永星特种设备研发的DZL型生物质锅炉是一种采用生物质颗粒做燃料的单锅筒纵置式链条炉排锅炉，是新一代高效节能的锅炉产品。它采用的燃料生物质是一种理想的可再生能源，每年都有大量的产出，用它代替煤的燃烧，不仅可以为企业降低成本，带来丰厚的经济回报，也能废物利用,增加了农民的收入，实现了经济效益和社会效益的共同发展。不仅如此，此锅炉还具有升压快、热效率高、受热面积大等优。

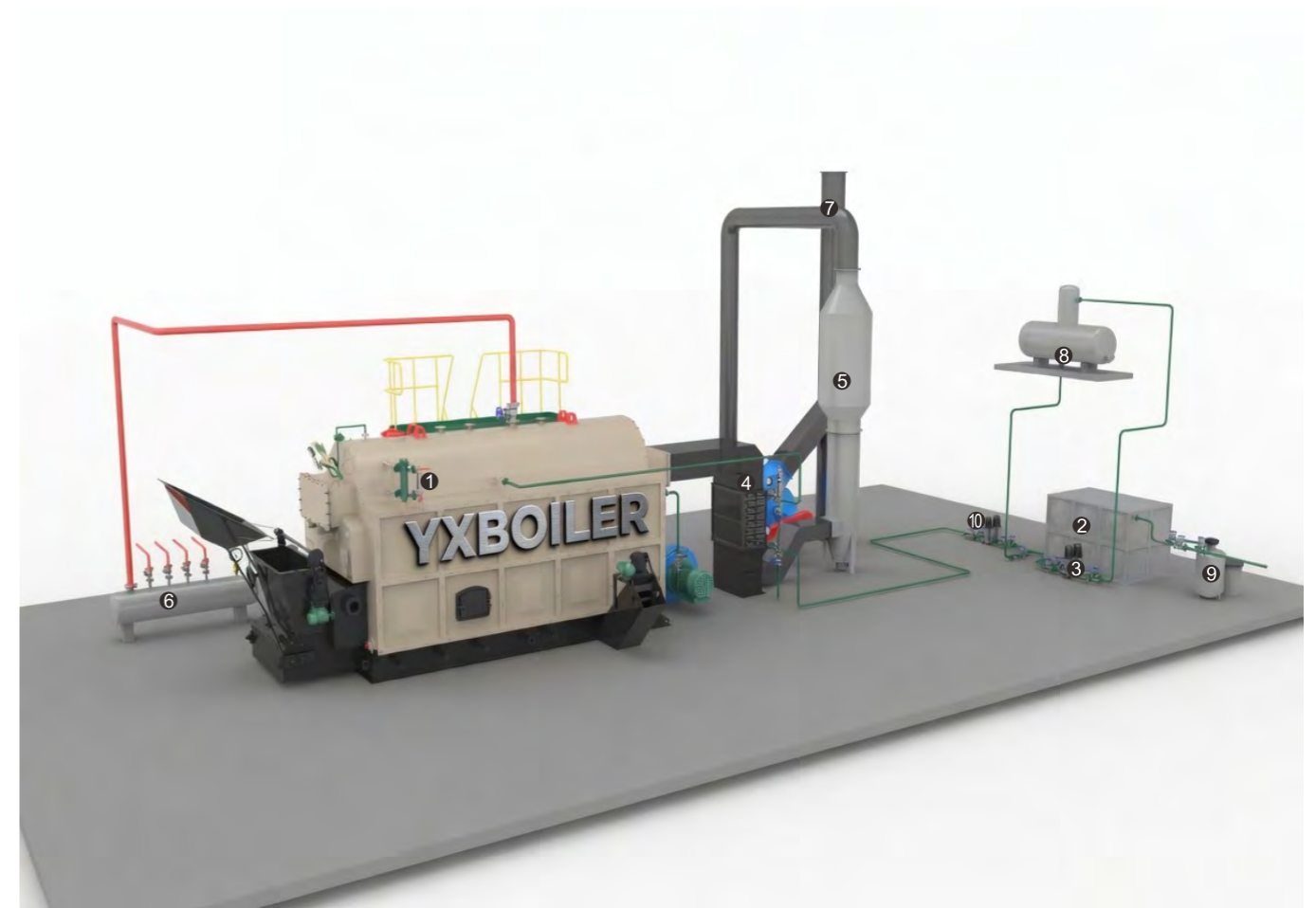
DZL型生物质锅炉是一种卧式三回程水水管锅炉，设计时采用了高效节能强化燃烧技术，保证了燃料的充分燃烧。更好的是炉膛、燃烬室的容积非常大，有利于飞灰的燃烬和沉降。出口烟窗处设置的有灰尘粗分离转向室，达到了锅炉炉内除尘的目的，降低了烟气中污染物的排放量，使之达到国家环保规定的指标。

The DZL type biomass boiler developed by Yongxing Boiler, with single-drum horizontal chain grate, using biomass pellets as fuel, is a new generation of high-efficiency and energy-saving boiler. Its fuel biomass is an ideal renewable energy source, which has large amount of output every year. It can replace the burning of coal, which not only reduces costs for enterprises, bring rich economic returns, but also realizing waste utilization and increase farmers' income, achieving the common development of economic and social benefits. It also has the advantages of fast boosting, high thermal efficiency and large heating area.

DZL type biomass boiler is a horizontal three-return water-fire tube boiler. It adopts high efficiency, energy saving and intensified combustion technology in the design to ensure the full combustion of fuel. The volume of the furnace and the combustion chamber is very large, which is conducive to completely burning and settlement of the fly ash. Dust coarse separation steering chamber installed at the exit smoke window, which achieves the purpose of dust removal, reduces the emission of pollutants in flue gas and makes it meet the national environmental protection regulations.

系统图 SYSTEM DIAGRAM

— 蒸汽管道 Steam Pipeline
— 补水管道 Water Supply Pipeline



设备名称 Equipment Name

- ① 锅炉 Boiler
- ② 水箱 Water Tank
- ③ 除氧泵 Deaerator Pump
- ④ 节能器 Economizer
- ⑤ 旋风除尘器 Cyclone Dust Remover
- ⑥ 分水缸 Water Separating Header
- ⑦ 烟囱 Chimney
- ⑧ 除氧器 Deaerator
- ⑨ 软水器 Water Softener
- ⑩ 给水泵 Feed Water Pump

生产基地: 中国河南太康锅炉产业园
Address: Boiler Industrial Zone, Taikang, Henan, China
website: www.yxboiler.com
E-mail: sales@yxboiler.com
WhatsApp: +86-13037600603

性能特点 PERFORMANCE CHARACTERISTICS

采用螺纹烟管传热，提高了热效率，降低了能耗。

The use of threaded pipe heat transfer improves thermal efficiency and reduces energy consumption.

膜式水冷壁结构的应用，提高了传热系数和传热效果，降低了热损失。

The application of the membrane water wall structure improves the heat transfer coefficient and effect and reduces heat loss.

螺纹烟管设置于锅壳内，总体漏风少，排烟热损失小。

The threaded pipe is placed inside boiler shell, low leakage and small heat loss of exhaust gas.

锅炉的焊缝均采用先进的埋弧自动焊工艺，保证了焊接质量。

Advanced submerged arc automatic welding process is adopted for the longitudinal and circumferential welds of the boiler to ensure the welding quality.

尾部烟道布置有除尘器，保证烟尘排放符合环保要求。

The tail flue is equipped with dust collector to ensure that the dust emission meets environmental protection requirements.

自动化水平高，具有水自动调节、低水位联锁保护、高低水位报警等功能。

Highly automation level, with automatic water regulation, low water level interlock protection, high and low water level alarm and other functions.

先进的拱形设计，形成明显倒“α”火焰，有利于劣质煤的燃烧，煤种适应性强。

Advanced arch design forms an obvious "α" flame, which is conducive to the burning of inferior coal and has strong adaptability to coal types.

控制监测仪表齐全，锅炉运行安全可靠。

Complete control and monitoring instruments, safe and reliable boiler operation.

两翼烟道的设置，使烟气能够顺利进入前烟箱，使之前管板温度相同，避免因温度应力而产生管板裂纹。

The setting of the two-wing flue enables the flue gas smoothly enter into the front smoke box, making the temperature of the front tube plate be the same, and avoiding the crack of the tube plate caused by the temperature stress.

炉排采用新型小鳞片式炉排片，增加了独有的保险环，使炉排运行稳定可靠，提高了燃烧效率。

Chain grate adopts new type of small scale-type grate, which adds a unique safety ring to make the grate stable and reliable, improving combustion efficiency.

生产基地: 中国河南太康锅炉产业园
Address: Boiler Industrial Zone, Taikang, Henan, China
website: www.yxboiler.com
E-mail: sales@yxboiler.com
WhatsApp: +86-13037600603

YXBOILER.COM YXBOILER.COM YXBOILER.COM YXBOILER.COM YXBOILER.COM YXBOILER.COM YXBOILER.COM

技术参数 TECHNICAL PARAMETERS

蒸汽锅炉 Steam Boiler

型号规格 Model	额定蒸发量 Rated Steam Capacity (t/h)	额定工作压力 Rated Working Pressure (MPa)	饱和蒸汽温度 Saturated Steam Temperature (°C)	热效率 Heat Efficiency (%)	设计燃料 Design Fuel	最大运输重量 Max Transport Weight (kg)	最大运输尺寸 Max Transport Dimension(LxWxH) (mm)
DZL0.5-1.25-SCII	0.5	1.25	194	84.3	煤 生物质 燃料 Coal Biomass Fuel	11000	3300x2000x2656
DZL1-1.25-SCII	1			84.87		15000	5200x2100x2600
DZL2-1.25-SCII	2			84.94		23000	5650x2400x2700
DZL3-1.25-SCII	3			84.9		24000	5700x2600x2800
DZL4-1.25-SCII	4			84.37		29000	6850x2700x3200
DZL6-1.25-SCII	6			85.72		32000	6800x2900x3400
DZL8-1.25-SCII	8			85.28		35000	7200x3200x3800
DZL10-1.25-SCII	10			85.47		40000	7900x3400x5500

承压热水锅炉 Pressure Bearing Hot Water Boiler

型号规格 Model	额定热功率 Rated Heat Power (MW)	额定工作压力 Rated Working Pressure (MPa)	额定出/回水温度 Rated Outlet/Return Temp (°C)	热效率 Heat Efficiency (%)	设计燃料 Design Fuel	最大运输重量 Max Transport Weight (kg)	最大外型尺寸 Max Dimension (mm)
DZL0.35-1.0/115/70-SCII	0.35	1.0	115/70	84	煤 生物质 燃料 Coal Biomass Fuel	11000	3300x2000x2656
DZL0.7-1.0/115/70-SCII	0.7					14500	4800x2150x2960
DZL1.4-1.0/115/70-SCII	1.4					25000	5280x2380x3030
DZL2.1-1.0/115/70-SCII	2.1					26000	5500x2420x3250
DZL2.8-1.0/115/70-SCII	2.8					28000	6000x2500x3400
DZL4.2-1.0/115/70-SCII	4.2					30000	7200x2600x3800
DZL5.6-1.0/115/70-SCII	5.6					35000	7600x2800x4200
DZL7.0-1.0/115/70-SCII	7					40000	8000x3200x5580

常压热水锅炉 Atmospheric Pressure Hot Water Boiler

型号规格 Model	额定热功率 Rated Heat Power (MW)	额定工作压力 Rated Working Pressure (MPa)	额定出/回水温度 Rated Outlet/Return Temp (°C)	热效率 Heat Efficiency (%)	设计燃料 Design Fuel	最大运输重量 Max Transport Weight (kg)	最大外型尺寸 Max Dimension (mm)
CDZL0.35-85/60-SCII	0.35	0	85/60	84	煤 生物质 燃料 Coal Biomass Fuel	9000	3300x2000x2656
CDZL0.7-85/60-SCII	0.7					14500	4800x2150x2960
CDZL1.4-85/60-SCII	1.4					25000	5280x2380x3030
CDZL2.1-85/60-SCII	2.1					26000	5500x2420x3250
CDZL2.8-85/60-SCII	2.8					28000	6000x2500x3400
CDZL4.2-85/60-SCII	4.2					30000	7200x2600x3800
CDZL5.6-85/60-SCII	5.6					35000	7600x2800x4200
CDZL7.0-85/60-SCII	7					40000	8000x3200x5580

· SZL型 ·

生物质(燃煤)锅炉

节能减排
新选择

SZL BIOMASS (COAL) FIRED BOILER



产品简介 PRODUCT INTRODUCTION

SZL型生物质锅炉采用双锅筒纵置式布置，燃烧方式为链条炉排，燃料为清洁能源生物质(燃烧过程中不仅不会产生废气、废物、废烟，而且造价低，容易获得，实现了废物再利用)，符合市场的发展趋势和客户的需求。此锅炉由上部的本体受热面和下部的燃烧设备两大件组成。燃料在燃烧设备中燃烧，产生的烟气经炉膛、燃烬室、对流管束等进入尾部烟道，随后通过除尘器、引风机、烟囱等排入大气。

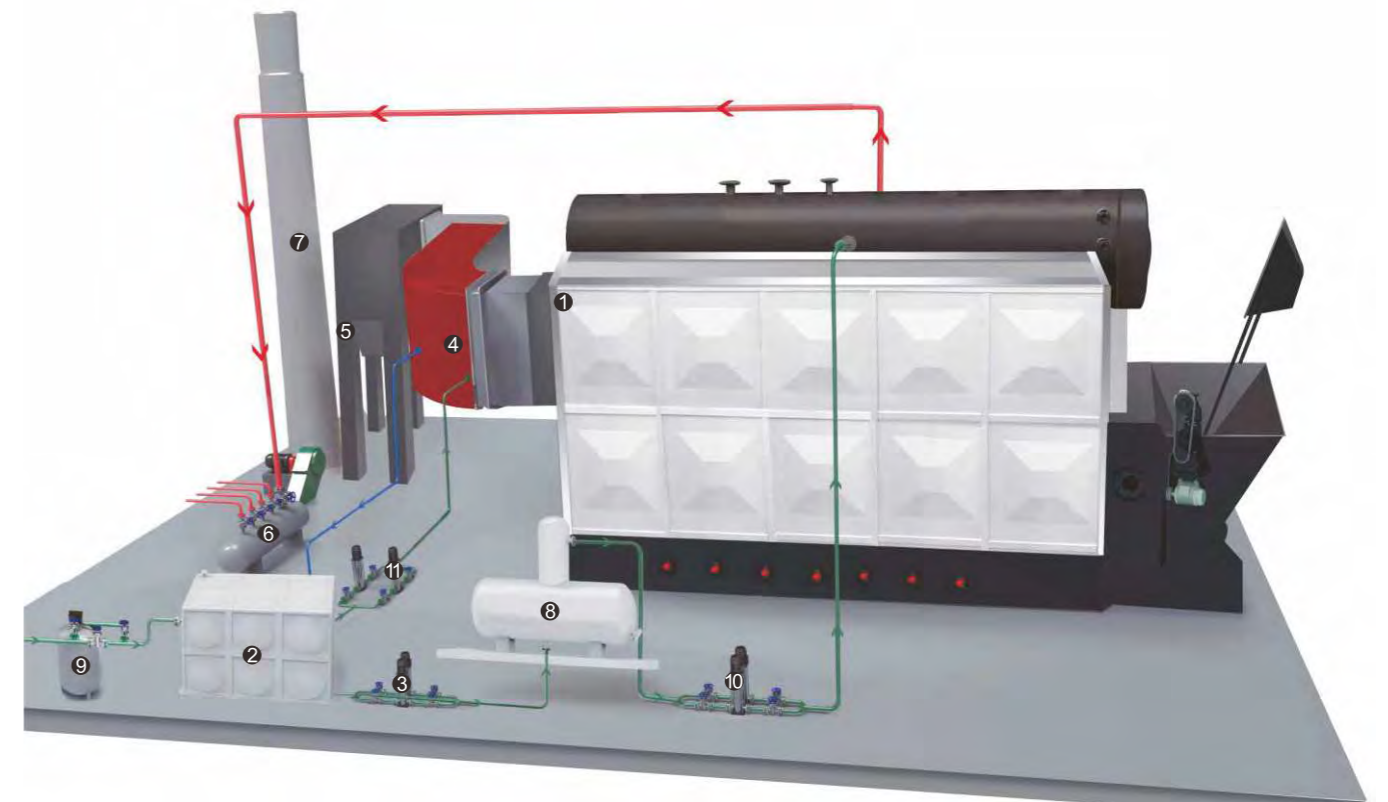
SZL型生物质锅炉的炉膛两侧采用膜式水冷壁结构，既提高了锅炉的密封性，也增加了炉膛的容积和受热面。更好的是前后墙布置的有二次风（由阀门控制），不仅使燃料充分燃尽，提高了燃烧效率和热效率，降低了燃料成本的投入，而且减少了废物、废渣的产生。更好的是它还具有自动化水平高、运行安全稳定、保护功能完善等优势，成为不少企业购买锅炉的理想选择。

SZL type biomass boiler adopts double-drum vertical arrangement with chain grate, and the fuel is clean energy biomass (Cannot produce waste gas and waste smoke under combustion with low cost and easily obtain features, all to realize waste recycling), it meets market trends and customer request. The boiler consists of two parts: the upper body boiler and the lower combustion part. The fuel is burned in the combustion chamber, and the generated flue gas which enters the tail flue through furnace, combustion chamber, convection tube bundle, etc, and then discharge to the air by dust remover, induced draft fan and chimney.

The two sides on the chamber of SZL biomass boiler adopts membrane all wall structure, which not only improves the sealing performance of boiler, but also increases the volume and the heating surface. What is better is that the front and rear walls are arranged with secondary air (controlled by the valve), which not makes fully combustion of fuel, but also improves the combustion and thermal efficiency, reducing the fuel cost and waste generation. What's even better is that it also has the advantages of high automation, safe and stable operation, perfect protection function, etc. It has become an ideal choice for many enterprises who plan to purchase boiler.

系统图 SYSTEM DIAGRAM

- 蒸汽管道 Steam Pipeline
- 补水管道 Water Supply Pipeline
- 循环水管道 Return Pipeline



设备名称 Equipment Name

- | | | |
|------------------------------|-------------------------------|--------------------------|
| ① 锅炉 Boiler | ⑥ 分水缸 Water Separating Header | ⑪ 节能泵 Energy-Saving Pump |
| ② 水箱 Water Tank | ⑦ 烟囱 Chimney | |
| ③ 除氧泵 Deaerator Pump | ⑧ 除氧器 Deaerator | |
| ④ 节能器 Economizer | ⑨ 软水器 Water Softener | |
| ⑤ 旋风除尘器 Cyclone Dust Remover | ⑩ 给水泵 Feed Water Pump | |

生产基地: 中国河南太康锅炉产业园
Address: Boiler Industrial Zone, Taikang, Henan, China
website: www.yxboiler.com
E-mail: sales@yxboiler.com
WhatsApp: +86-13037600603

性能特点 PERFORMANCE CHARACTERISTICS

对流布置受热面换热效率高，锅炉运行效率平稳。

Convection layout can make high heat transfer efficiency, and it is stable for boiler operation efficiency.

链条炉排面板，前后烟箱面板全都采用数控等离子切割机切割，整齐美观。

Both front and rear smoke box adopt CNC plasma cutting technology when make it neat and beautiful.

锅筒容积较大，内部装置齐全。

Large drum volume and complete internal equipment.

锅炉具有给水自动调节、高低水位自动报警、超压自动保护、熄火自动保护等功能。

The boiler has some functions, such as automatic adjustment of water supply, automatic alarm of high and low water level, automatic protection of overpressure, automatic protection of flameout, etc.

锅炉运行平稳且具有一定的超负荷运行能力。

The boiler runs smoothly running and has a certain overload operation ability.

前、后拱匹配合理，炉拱的覆盖率高，炉膛温度高。

The front and rear arches are properly matched, the coverage of the furnace arch is large, and high temperature of furnace chamber.

双锅筒布置，燃烧效率高，运行费用节省5-10%。

Double drums arrangement, high combustion efficiency and 5-10% savings in operating costs.

各受热面下降面与上升管的截面比合理，燃烧工况稳定。

It is reasonable for cross-section ratio which from falling surface and upper pipe, also combustion condition is stable.

各风室不同燃料不同燃烧阶段所需的空气量可人为调整，横向风压一致，不会出现偏烧现象。

The amount of air can be artificially adjusted which required for different combustion stages and different fuels in each plenum, and the lateral wind pressure is consistent, no partial burning phenomenon.

技术参数 TECHNICAL PARAMETERS

蒸汽锅炉 Steam Boiler

型号规格 Model	额定蒸发量 Rated Steam Capacity	额定工作压力 Rated Working Pressure	饱和蒸汽温度 Saturated Steam Temperature	热效率 Heat Efficiency	设计燃料 Design Fuel	最大运输重量 Max Transport Weight	最大运输尺寸 Max Transport Dimension(LxWxH)
unit	(t/h)	(MPa)	(°C)	(%)		(kg)	(mm)
SZL4-1.25-SCII	4	1.25	194/225	84.88	煤 生物质 燃料 Coal Biomass Fuel	23000	6300x2300x3200
SZL6-1.25-SCII	6			84.84		25000	7700x2800x3450
SZL8-1.25-SCII	8			84.9		27000	7800x3100x3520
SZL10-1.25-SCII	10			85.4		30000	7900x3300x3640
SZL15-1.25-SCII	15			88.6		40000	10000x3200x3500
SZL20-1.25-SCII	20			89.2		45000	11000x3300x3500

承压热水锅炉 Pressure Bearing Hot Water Boiler

型号规格 Model	额定热功率 Rated Heat Power	额定工作压力 Rated Working Pressure	额定出/回水温度 Rated Outlet/Return Temp	热效率 Heat Efficiency	设计燃料 Design Fuel	最大运输重量 Max Transport Weight	最大外型尺寸 Max Dimension
unit	(MW)	(MPa)	(°C)	(%)		(kg)	(m)
SZL4.2-1.0/115/70-SCII	4.2	1.0	115/70	84.9	煤 生物质 燃料 Coal Biomass Fuel	23000	10.2x3.2x5.8
SZL5.6-1.0/115/70-SCII	5.6			85.1		34000	11.7x3.5x5.9
SZL7.0-1.0/115/70-SCII	7			85.4		35000	11.9x3.2x6.4
SZL10.5-1.0/115/70-SCII	10.5			88.6		39000	12.6x4.6x6.7
SZL14-1.0/115/70-SCII	14			88.9		45000	13.8x5.2x8.4

常压热水锅炉 Atmospheric Pressure Hot Water Boiler

型号规格 Model	额定热功率 Rated Heat Power	额定工作压力 Rated Working Pressure	额定出/回水温度 Rated Outlet/Return Temp	热效率 Heat Efficiency	设计燃料 Design Fuel	最大运输重量 Max Transport Weight	最大外型尺寸 Max Dimension
unit	(MW)	(MPa)	(°C)	(%)		(kg)	(m)
CSZL4.2-85/60-SCII	4.2	0	85/60	84.5	煤 生物质 燃料 Coal Biomass Fuel	23000	10.2x3.2x5.8
CSZL5.6-85/60-SCII	5.6			84.8		34000	11.7x3.5x5.9
CSZL7.0-85/60-SCII	7			85.1		35000	11.9x3.2x6.4
CSZL10.5-85/60-SCII	10.5			88.2		39000	12.6x4.6x6.7
CSZL14-85/60-SCII	14			88.1		45000	13.8x5.2x8.4

生产基地: 中国河南太康锅炉产业园
Address: Boiler Industrial Zone, Taikang, Henan, China
website: www.yxboiler.com
E-mail: sales@yxboiler.com
WhatsApp: +86-13037600603

·YY(Q)W型·

燃油燃气导热油炉
科技引领
热效率更高

YY(Q)W OIL /GAS FIRED THERMAL FLUID HEATER



产品简介 PRODUCT INTRODUCTION

YY(Q)W型燃油燃气导热油炉是一种新型的供热设备，以油或气做燃料，以导热油为传导介质，利用循环油泵，强制导热油进行液相循环，将热能输送给用热设备后再返回加热炉重新加热，具有低压、高温的工作特性。另外，它还可以根据客户要求，同时输出两种或更多不同温度的导热油，因此，被广泛的应用于石油、化工、纺织、印染、塑料、食品等行业，并得到广大客户的一致信赖与认可。

YY(Q)W型燃油燃气导热油炉采用卧式三回程结构，受热面主要由内盘管组成的辐射受热面和中、外盘管与内盘管组成的对流受热面组成，结构非常紧凑。燃料在燃烧室内燃烧并放热，受热面吸收大部分热量后，烟气进入对流受热面并进行换热，最后由引风机将烟气送至烟囱直至排入大气。此锅炉的系统利用率高，运行维修方便，控制系统完善，而且节能、环保、安全，是目前理想供热设备的首选。

YY(Q)W gas and oil thermal oil heater is a new type of heating equipment, which uses oil or gas as fuel and heat conducting oil as medium. It uses circulating oil pump and forced heat conducting oil to conduct liquid phase circulation. The heat energy is transported to the heating equipment and then return to the heating furnace for reheating, with working features of lower pressure and high temperature. In addition, it can also discharge two or more heat conducting oils at different temperatures according to customers' requirements. Therefore, it is widely used in petroleum, chemical industry, textile, printing and dyeing, plastics, food and other industries, and has been unanimously trusted and recognized by customers.

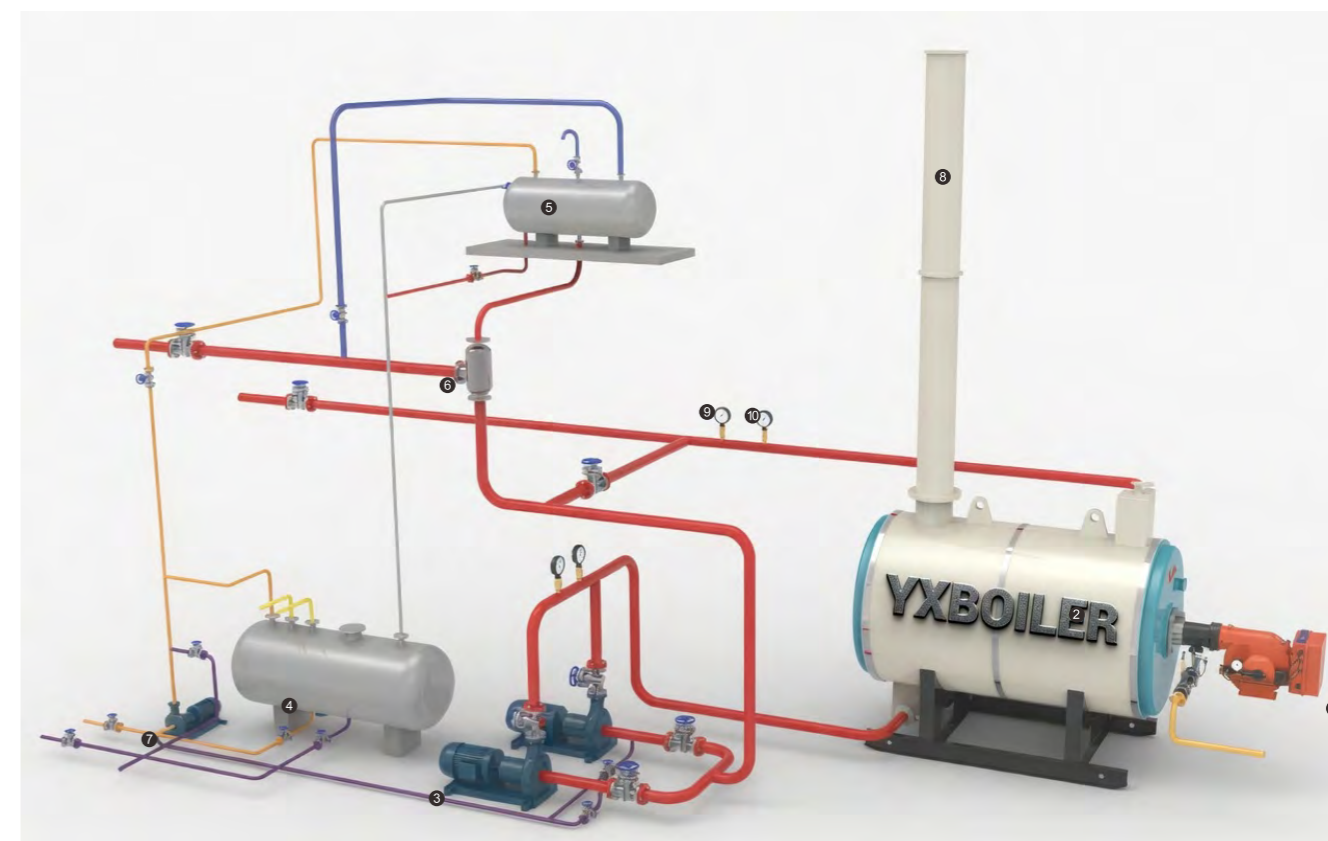
YY(Q)W gas and oil thermal oil heater adopts horizontal three-way structure. The heating surface is with compact structure, mainly composed of the radiation heating surface consisted of the inner coil pipes and the convection heating surface consisted of the middle and outer coil pipes and the inner coil pipes. The fuel is burned in the combustion chamber and exothermic. After the heating surface absorbs most of the heat, the smoke enters the convection heating surface to exchange heat. Finally, the smoke is sent to the chimney by the induced draught fan until it is discharged into the atmosphere. With high system utilization, convenient operation and maintenance, perfect control system, energy saving, environmental protection and safety, it is the first choice for present ideal heating supply equipment.

生产基地: 中国河南太康锅炉产业园
Address: Boiler Industrial Zone, Taikang, Henan, China
website: www.yxboiler.com
E-mail: sales@yxboiler.com
WhatsApp: +86-13037600603

YXBOILER.COM YXBOILER.COM YXBOILER.COM YXBOILER.COM YXBOILER.COM YXBOILER.COM YXBOILER.COM

系统图 SYSTEM DIAGRAM

- 主管道 Water pipe
- 排气管 Exhaust pipe
- 注油管 Hot water pipe
- 天然气管道 Natural gas pipe
- 排污管 Safety valve relief pipe



设备名称 Equipment Name

- | | | | |
|-------|------------------|---------|-------------------|
| ① 燃烧器 | Burner | ⑥ 油气分离器 | Oil-gas separator |
| ② 锅炉 | Boiler | ⑦ 注油泵 | Oil filling pump |
| ③ 循环泵 | Circulation pump | ⑧ 烟囱 | Chimney |
| ④ 储油罐 | Oil storage tank | ⑨ 压力表 | Pressure gauge |
| ⑤ 高位槽 | High level tank | ⑩ 温度表 | Temperature gauge |

性能特点 PERFORMANCE CHARACTERISTICS

该锅炉采用先进的控制系统对介质进行控制工作，热效率高，维修方便。

Advanced control system to control the medium with high thermal efficiency and convenient maintenance.

锅炉结构紧凑，节约了占地面积。

With compact structure, saving the floor space.

集自动检测、控制、连锁报警提示于一体，锅炉运行无需值守，节省了人力。

Integrated with automatic detection, control and linkage alarm. No need for special on duty for boiler operation can save manpower.

炉膛尺寸与燃烧的火焰相匹配，辐射换热率高。

High radiation heat transfer rate with matched furnace size and combustion fire.

加热系统简单，不需要水处理设备，减少了投资。

Simple heating system and less investment without water treatment.

采用盘管结构，受热面充足，热效率高。

With coil structure, sufficient heating surface and high thermal efficiency.

安装方便，只要本体和燃烧室合拢即可。

Easy installation, as long as the body and combustion chamber are closed.

锅炉尾部设置的有空气预热器，大大提高了锅炉的效率。

Air preheater at the end of the boiler greatly improves the efficiency of the boiler.

供热高达300℃以上，一般工作压力在1MPa以下，使得锅炉运行安全可靠。

Heating up to above 300 °C. General working pressure under 1MPa, making the boiler safe and reliable operation.

辐射盘管的直径、长度与配型燃烧器的火焰相适应，保证了盘管的可靠工作和充分冷却。

The diameter and length of the radiant coil are adapted to the flame of the matching burner to ensure the reliable operation and sufficient cooling of the coil.

技术参数 TECHNICAL PARAMETERS

YY(Q)W型燃油燃气导热油炉 YY(Q)W Oil /gas Fired Thermal Fluid Heater

型号规格	额定热功率	额定工作压力	最高工作温度	设计效率	介质循环量	受热面积	设计燃料	炉内介质容量	最大运输重量	最大运输尺寸
Model	Rated Heat Power	Rated Working Pressure	Max Working Temperature	Designed Efficiency	Medium Circulation Rate	Heating Area	Design Fuel	Medium Volume in Furnace	Max Transport Weight	Max Transport Dimension(LxWxH)
unit	(x10 ⁴ kcal/h)	(MPa)	(°C)	(%)	(m ³ /h)	(m ²)		(m ³)	(kg)	(mm)
YY(Q)W-240Y(Q)	20				16.6	19		0.12	2110	1800x1100x2200
YY(Q)W-350Y(Q)	30				28.1	23		0.25	2580	2100x1400x2450
YY(Q)W-500Y(Q)	40				32.5	35		0.31	3141	2710x1540x2230
YY(Q)W-700Y(Q)	60				45	39		0.36	4053	3130x1540x2230
YY(Q)W-1000Y(Q)	80				55	45		0.49	4382	3200x1800x2210
YY(Q)W-1200Y(Q)	100				64	56		0.61	5209	3400x2150x2200
YY(Q)W-1400Y(Q)	120				77	104		1.05	6400	4605x2070x2670
YY(Q)W-1900Y(Q)	160	0.8	300/320	94	82	109	油/气 Oil/Gas	1.4	9000	4490x1975x2600
YY(Q)W-2100Y(Q)	180	1.0			108	118		1.6	9156	4950x2000x2700
YY(Q)W-2400Y(Q)	200				128	129		1.8	10000	5300x2080x2750
YY(Q)W-3000Y(Q)	250				161	210		2.2	13000	5600x2170x2800
YY(Q)W-3500Y(Q)	300				225	244		2.75	14000	5800x2310x2850
YY(Q)W-4200Y(Q)	360				256	280		2.92	15000	6010x2800x2750
YY(Q)W-5000Y(Q)	400				290	310	3.05	16600	6600x2900x2860	
YY(Q)W-6000Y(Q)	500				355	389	3.33	21550	7400x3100x3000	
YY(Q)W-7000Y(Q)	600				408	469	3.69	28400	8000x3400x3150	

生产基地: 中国河南太康锅炉产业园
Address: Boiler Industrial Zone, Taikang, Henan, China
website: www.yxboiler.com
E-mail: sales@yxboiler.com
WhatsApp: +86-13037600603

YXBOILER.COM YXBOILER.COM YXBOILER.COM YXBOILER.COM YXBOILER.COM YXBOILER.COM

· YGL型 ·

生物质(燃煤)导热油炉
变废为宝
花钱最少

YGL BIOMASS (COAL) FIRED THERMAL FLUID HEATER



产品简介 PRODUCT INTRODUCTION

YGL型生物质导热油炉，它是生物质颗粒为燃料，以导热油为介质，利用循环油泵强制导热油进行液相循环，将热能传给用热设备后再返回加热炉重新加热的一种强制循环立式生物质锅炉，是一种理想的供热设备。它采用三回程盘管设计，受热面充足，膨胀充分吸收，实现了低压高温供热。它还可以增加节能器，使锅炉运行起来更加节能，可以更加高效、节能的服务于各行各业。

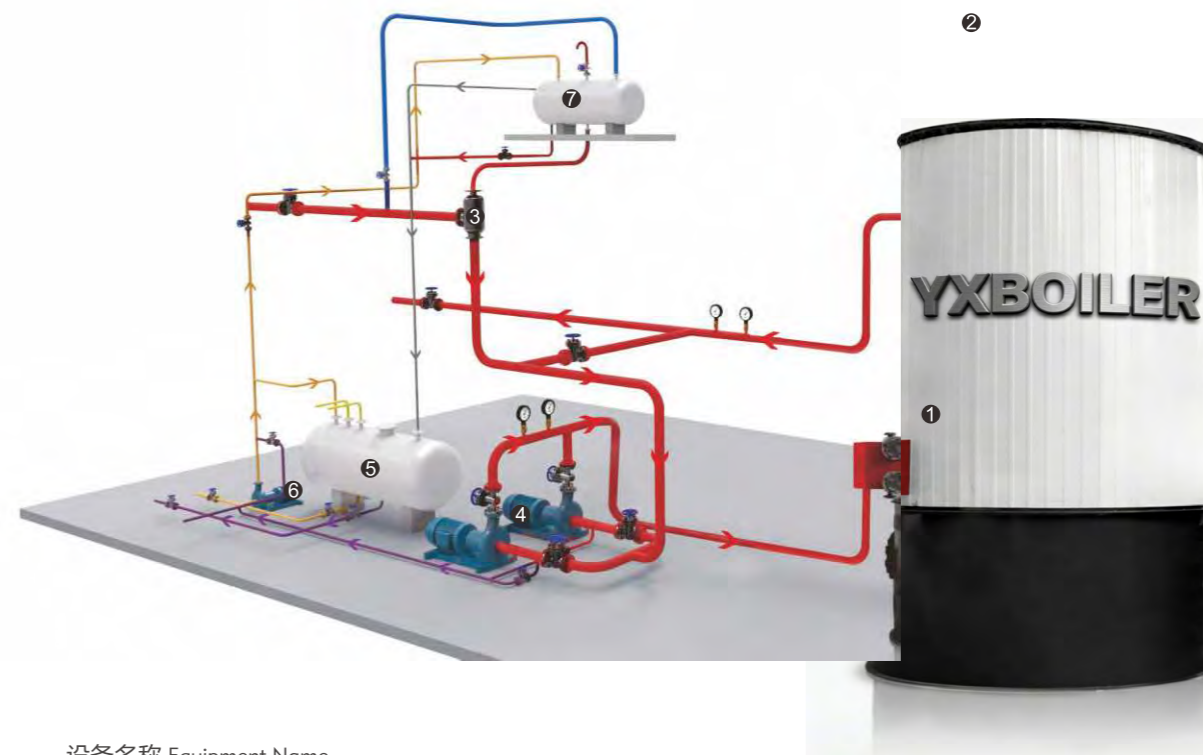
永星特种设备生产的YGL型生物质导热油炉具有低压、高温的工作特性，供热温度最高可达液相340°C，因此，凡是需要均匀加热且不允许火焰直接加热、加热温度在150-380°C的各种生产场合都可以使用。更好的是锅炉具有热利用率高、传热性能佳、运行安全可靠、保护功能完善、操作维护方便等优势，具有其他设备无可比拟的优越性，因此，不仅广泛应用于各行各业，而且销往全球多个国家和地区。

YGL biomass thermal oil heater is a kind of forced circulation vertical biomass boiler that takes biomass particles as fuel and heat conducting oil as medium, using circulation oil pump to force the circulating oil to conduct the liquid phase circulation, and transfers the heat energy to the heating equipment and returns to the heating furnace for reheating. It is an ideal heating equipment. Three-return coil design with sufficient heating surface and expansion and absorption, realizing low-pressure and high-temperature heating. Also the economizer can be added to make the boiler more energy saving, which can be more efficient used in all walks of life.

YGL biomass thermal oil heater provided by Yongxing Boiler Group is with low pressure, high temperature performance, better heating temperature up to 340°C in liquid phase. Therefore, it can be used in various production situations where require uniform heating without direct flame heating and the heating temperature of 150-380°C. Better that, boilers have advantages such as high heat utilization rate, good heat transfer performance, safe and reliable operation, perfect protection function, convenient operation and maintenance, etc., which have unparalleled advantages to other equipment. Therefore, they are not only widely used in all industries, but also exported to many countries and regions all over the world.

系统图 SYSTEM DIAGRAM

- 主管道 Main Pipeline
- 注油管 Oil Feeding Pipe
- 天然气管道 Natural Gas Pipeline
- 排污管 Blowdown Pipe
- 排气道 Exhaust Pipeline
- 水管道 Water Pipeline



设备名称 Equipment Name

- ① 锅炉 Boiler
- ② 烟囱 Chimney
- ③ 油气分离器 Oil Gas Separator
- ④ 循环泵 Circulating Pump
- ⑤ 储油罐 Oil Storage Tank
- ⑥ 注油泵 Oil Feeding Pump
- ⑦ 高位槽 High Level Oil Tank

生产基地: 中国河南太康锅炉产业园
Address: Boiler Industrial Zone, Taikang, Henan, China
website: www.yxboiler.com
E-mail: sales@yxboiler.com
WhatsApp: +86-13037600603

YXBOILER.COM YXBOILER.COM YXBOILER.COM YXBOILER.COM YXBOILER.COM YXBOILER.COM

性能特点 PERFORMANCE CHARACTERISTICS

以生物质颗粒为燃料，变废为宝，节能减排，符合现在的政策要求。

Take biomass particles as fuel, turn waste into treasures, and save energy and reduce emissions, meeting the current policy requirements.

YGL型生物质导热油炉为封闭循环供热，与大气相通，延长了使用寿命。

Closed circulation heating system, connected with the atmosphere, which extends the service life.

在燃烧室内，燃料为绝热燃烧，着火更容易，燃烧更充分，提高了热效率。

Adiabatic fuel combustion in the combustion chamber makes easier ignition, sufficient combustion and higher thermal efficiency.

锅炉运行过程中只承受泵压，而且导热油也没有爆炸的危险。

Only bear pump pressure during operation, no risks of explosion of heat conducting oil.

液相循环供热，无冷凝排放热损失，供热系统热效率高。

Liquid phase circulation heating without heat loss caused by condensation, and high thermal efficiency of heating system.

锅炉的炉顶布置了密排盘管，避免了炉顶烧坏的现象。

Equipped with dense coils on the furnace top of the boiler to avoid the burnout of the furnace top.

锅炉调节方便，供热均匀，能够满足精确的工艺温度。

Easy adjustment and uniform heating to meet the accurate process temperature.

为了应对工作介质温度升降对体积的变化，我们在系统内添加了补偿技术措施。

Compensated technical measures in the system added in order to cope with the volume change of temperature rising and falling of working medium.

安装时，只要把上部本体和下部燃烧室合拢就可以，非常的简单方便，缩短了安装周期。

Convenient installation and shorter installation cycle that during installation just close together the upper body and the lower combustion chamber.

受热面由内外密排的圆盘管构成，降低了管子表面的热负荷，使导热油使用更安全。

With inner and outer densely packed coil composed the heat surface, lower heat load on the pipe surface and safer conduction oil.

技术参数 TECHNICAL PARAMETERS

YGL型生物质导热油炉 YGL Biomass (coal) Fired Thermal Fluid Heater

型号规格	额定热功率	额定工作压力	最高工作温度	设计效率	介质循环量	受热面积	设计燃料	炉内介质容量	最大运输重量	最大运输尺寸
Model	Rated Heat Power	Rated Working Pressure	Max Working Temperature	Thermal Efficiency	Medium Circulation Rate	Heating Area	Design Fuel	Medium Volume in Furnace	Max Transport Weight	Max Transport Dimension(LxWxH)
unit	(x10 ⁴ kcal/h)	(MPa)	(°C)	(%)	(m ³ /h)	(m ²)		(m ³)	(kg)	(mm)
YGL-120SCII	10				12.5	7.3		0.06	3000	840x1608
YGL-240SCII	20				20	16.3		0.19	3300	1250x2080
YGL-350SCII	30				30	22.4		0.26	3600	1350x2050
YGL-500SCII	40				40	30.8		0.37	4000	1450x2300
YGL-700SCII	60	0.7	290/320	84	60	44	生物质燃料 Biomass Fuel	0.5	4500	1750x2680
YGL-1000SCII	80	1.0			80	63.2		0.7	5100	1750x2990
YGL-1200SCII	100				100	71		0.8	5400	2250x3030
YGL-1400SCII	120				140	87.6		1.05	6000	2250x3140

· YLW型 ·

生物质(燃煤)导热油炉
智能操作
多重保护

YLW BIOMASS (COAL) FIRED THERMAL FLUID HEATER



产品简介 PRODUCT INTRODUCTION

YLW型生物质导热油炉是永星特种设备研发的一款强制循环链条炉排锅炉。它是以环保能源-生物质为燃料，以导热油为介质的一种新型供热设备，由上部本体和下部链条炉排组成。上部为炉膛辐射受热面，中部为蛇形管束组成的受热面，后部为对流面，运行过程中，锅炉可以根据实际要求进行精确的温度调节，能够满足客户不同的要求。更好的是锅炉具有完善的运行控制系统和安全监测装置，使得锅炉操作起来更加简单、方便。更好的是此锅炉的各类排放指标均低于国家《锅炉大气污染物排放标准》规定，而且运行成本与燃煤相比，节省5%-10%。因此，是替代燃煤锅炉的最佳产品。

YLW型生物质导热油炉在运行的过程中不会产生腐蚀和污垢，不会产生废气，再加上其本身具有的传热性能佳、后期维护方便快捷、热效率高等特点，因此，成为了一款既符合政策要求，也迎合客户所需的新型锅炉。

YLW series biomass thermal oil heater is a forced circulation chain grate boiler developed by Yongxing boiler Group. It is a new type of heating equipment using environmental energy-biomass as fuel and heat-conducting oil as medium. The heating surface and the rear are convection surfaces. During operation, the boiler can be accurately temperature adjusted according to actual requirements, which can meet different requirements of customers. It is even better that the boiler has a complete operation control system and safety monitoring device, making the operation of the boiler simpler and more convenient. Even better, the boiler's various emission indicators are lower than the national "Boiler Air Pollutant Emission Standard" regulations, and the operating cost is 5% -10% less than that of coal combustion.

YLW series thermal oil heater will not produce corrosion, dirt or flue gas in the process of operation. In addition, it has the characteristics of good heat transfer performance, convenient and quick maintenance and high thermal efficiency. Therefore, it has become not only a new type of boiler that meets the policy requirements, but also meet the needs of customers.

系统图 SYSTEM DIAGRAM

- 主管道 Water pipe
- 排气管 Exhaust pipe
- 注油管 Hot water pipe
- 冷水管道 Cold water pipeline
- 排污管 Safety valve relief pipe



设备名称 Equipment Name

- | | | | |
|---------|------------------------|-------|-------------------|
| ① 锅炉器 | Boiler | ⑧ 循环泵 | Circulation pump |
| ② 油气分离器 | Oil-gas separator | ⑨ 高位槽 | High level tank |
| ③ 储水罐 | Water storage tank | ⑩ 储油罐 | Oil storage tank |
| ④ 烟囱 | Chimney | ⑪ 鼓风机 | Forced draft fan |
| ⑤ 旋风除尘器 | Cyclone dust collector | ⑫ 引风机 | Induced draft fan |
| ⑥ 水膜除尘器 | Water film scrubber | ⑬ 软水器 | Water softer |
| ⑦ 余热炉 | Waste heat boiler | ⑭ 给水泵 | Feedwater pump |
| | | ⑮ 注油泵 | Filling pump |

生产基地: 中国河南太康锅炉产业园
Address: Boiler Industrial Zone, Taikang, Henan, China
website: www.yxboiler.com
E-mail: sales@yxboiler.com
WhatsApp: +86-13037600603

YXBOILER.COM YXBOILER.COM YXBOILER.COM YXBOILER.COM YXBOILER.COM YXBOILER.COM

性能特点 PERFORMANCE CHARACTERISTICS

锅炉循环供热前有严格控制工作介质内空气、水分及其他低挥发物含量的技术措施。

There are technical measures for strict control of air, water and other low volatile content in the working medium before boiler circulation heating.

结构紧凑，大大节约了锅炉房的占地面积。

Compact structure greatly saves the space of boiler room.

锅炉本体和链条炉排可以在工地现场组合，既减少了运输成本，又缩短了安装周期。

Boiler body and chain grate can be combined on site, which not only reduces the transportation cost, but also shortens the installation cycle.

炉拱设计合理，使得烟气在炉膛内停留的时间延长，使得燃烧更加充分。

Reasonable design of the furnace arch makes the time for the flue gas to stay in the furnace longer and makes the combustion more sufficient.

可在较低的运行压力下获得较高的工作温度。

Higher operating temperature can be obtained under lower operating pressure.

各种负荷下，热效率均能保持在最佳水平。

Thermal efficiency can all be kept at the best level under various loads.

以木屑、农林废弃物等为燃料，变废为宝。

Take wood chips, agricultural and forestry wastes as fuel and turn them into treasures.

炉膛有双密排盘管组成，降低了管子表面的热负荷，提高了安全性。

The furnace is composed of double close coils, which reduces the heat load on the surface of the pipe and improves the safety.

转向烟室布置的有受热面，避免了高温烟气直接冲刷隔墙，致使隔墙脱落而产生的烟气短路现象。

There is heating surface arranged for the smoke chamber, which avoids the phenomenon of smoke short circuit caused by the high-temperature smoke directly washing the partition wall, resulting in the separation wall falling off.

介质流程合理，由低处流向高处，使得运行产生的气体很难留在炉内，可以方便的排出系统。

The medium process is reasonable and flows from the low to the high position, making it difficult for the gas generated by operation to stay in the furnace and convenient to discharge the system.

技术参数 TECHNICAL PARAMETERS

YLW型生物质导热油炉 YLW Biomass (coal) Fired Thermal Fluid Heater

型号规格	额定热功率	额定工作压力	最高工作温度	设计效率	介质循环量	受热面积	设计燃料	炉内介质容量	最大运输重量	最大运输尺寸
Model	Rated Heat Power	Rated Working Pressure	Max Working Temperature	Thermal Efficiency	Medium Circulation Rate	Heating Area	Design Fuel	Medium Volume in Furnace	Max Transport Weight	Max Transport Dimension(LxWxH)
unit	(x10 ⁴ kcal/h)	(MPa)	(°C)	(%)	(m ³ /h)	(m ²)		(m ³)	(kg)	(mm)
YLW-1400SCII	120				80	104		1.2	18000	4600x2300x3200
YLW-1900SCII	160				115	125		1.6	20000	4670x2320x2880
YLW-2100SCII	180				155	145		1.9	25000	4700x2680x3300
YLW-2400SCII	200				188	163		2.4	26500	4900x2700x3300
YLW-3000SCII	250				200	188	生物质燃料 Biomass Fuel	2.9	34000	5900x2700x3550
YLW-3500SCII	300	1.0	320	84	200	216		3.3	38000	7500x2900x1700
YLW-4200SCII	360				225	280		3.5	40000	7700x2900x2200
YLW-5000SCII	400				260	310		3.63	45000	8000x3000x2500
YLW-6000SCII	500				300	389		3.9	60000	9000x3100x3000
YLW-7000SCII	600				340	469		4.2	70000	10000x3200x3300

生产基地: 中国河南太康锅炉产业园
Address: Boiler Industrial Zone, Taikang, Henan, China
website: www.yxboiler.com
E-mail: sales@yxboiler.com
WhatsApp: +86-13037600603

YXBOILER.COM YXBOILER.COM YXBOILER.COM YXBOILER.COM YXBOILER.COM YXBOILER.COM

其他产品

OTHER PRODUCTS



永星工业设备
YXBOILER

sales@yxboiler.com +86-13037600603



燃油燃气蒸汽发生器
生物质蒸汽发生器
电加热蒸汽发生器

Oil/gas fired steam generator
Biomass steam generator
Electric heating steam generator

开式搪瓷反应釜
闭式搪瓷反应釜
电加热搪瓷反应釜
非标搪瓷反应釜

Open enamel reactor
Closed enamel reactor
Electric heated enamel reactor
Non-standard enamel reactor

开式不锈钢反应釜
闭式不锈钢反应釜
外盘管不锈钢反应釜
电加热不锈钢反应釜
非标不锈钢反应釜

Open stainless steel reactor
Closed stainless steel reactor
Outer coil stainless steel reactor
Electric heating stainless steel reactor
Non-standard stainless steel reactor

搪玻璃储罐
不锈钢储罐
碳钢储罐

Glass-lined storage tank
Stainless steel storage tank
Carbon steel storage tank

空气压力储罐
蒸汽压力储罐
蒸压釜
木材防腐罐
定压罐

Air pressure storage tank
Steam pressure storage tank
Autoclave
Wood anti-corrosion tank
Constant pressure tank

气化撬
液化气储罐
天然气储罐

Gasification sputum
Liquefied gas storage tank
Natural gas storage tank

液氮储罐
液氧储罐
液氩储罐
二氧化碳储罐

Liquid nitrogen storage tank
Liquid oxygen storage tank
Liquid argon storage tank
carbon dioxide storage tank

列管式换热器
螺旋板式换热器
搪瓷碟片式换热器
塔器设备

Tube heat exchanger
Spiral plate heat exchanger
Enameled disc heat exchanger
Tower equipment

生产基地: 中国河南太康锅炉产业园
Address: Boiler Industrial Zone, Taikang, Henan, China
website: www.yxboiler.com
E-mail: sales@yxboiler.com
WhatsApp: +86-13037600603

YXBOILER.COM YXBOILER.COM YXBOILER.COM YXBOILER.COM YXBOILER.COM YXBOILER.COM

VALUED CUSTOMERS & REMARKABLE CASES

黄金客户 案例精选

这是一个合作共赢的时代，永星特种设备勇于走在时代的前端，一方面坚持不懈地创新产品，另一方面锲而不舍地追求优质服务，事无巨细地为客户提供产品解决方案。

1981年至今,与中铁、中粮、中石油、双汇、伊利、蒙牛、比亚迪等多家国内外知名企业及单位，建立了稳固长期的战略合作关系，再一次展示了共赢发展的决心和与时俱进、着眼于未来变革的魄力。

This is an era of win-win cooperation. Yongxing boiler has the courage to walk in the front of the era. On the one hand, it keeps on innovating products, on the other hand, it keeps on pursuing high-quality services and provides customers with product solutions.

Since 1981, it has established a long-term and stable strategic cooperation relationship with China Railway, COFCO, CNPC, Shineway, Yili, Mengniu, BYD and other well-known enterprises and units at home and abroad, once again demonstrating the determination of win-win development and the courage to keep pace with the times and focus on future changes.



福建龙岩化工公司
4吨燃油蒸汽锅炉和180万大卡燃油导热油炉
4t/h oil fired steam boiler & 1,800,000 kcal oil fired thermal oil heater for Fujian chemical company



河南郸城薯业公司
10吨低氮冷凝锅炉
10t/h low nitrogen condensing boiler for Henan potato industry



河南建筑公司
8吨冷凝蒸汽锅炉
8t/h condensing steam boiler for Henan construction company



河南信阳粮业公司
10吨燃气冷凝锅炉
10t/h gas-fired condensing boiler for Henan grain industry



柬埔寨建材企业
6吨生物质蒸汽锅炉
6t/h biomass steam boiler for Cambodian building materials enterprise



江苏酒厂
20吨燃气冷凝锅炉
20t/h gas condensing boiler in Jiangsu brewery



贵州恒大扶贫产业园
6吨生物质链条热水锅炉
6t/h biomass chain hot water boiler for Guizhou poverty alleviation industrial park



缅甸军工企业
15吨燃气蒸汽锅炉
15T gas steam boiler for Military enterprise



河南开封煤业公司
20吨超低氮燃气蒸汽锅炉
20t/h ultra-low nitrogen gas steam boiler for Henan coal industry company



河南太康建材公司
6条31米蒸压釜和8吨冷凝燃气蒸汽锅炉
6 sets 31m autoclaves and 8T condensing gas steam boiler for Henan building materials company



宁夏煤矿
6台10吨燃气冷凝锅炉
6 sets 10 t/h gas condensing boilers for Ningxia coal mine industry



宁夏平罗能源有限公司
40吨蒸汽锅炉
40 t/h steam boiler for Ningxia energy company



蒙牛乳业
15吨燃气蒸汽锅炉
15T gas steam boiler for Mengniu milk industry



新疆
3台120万大卡热风炉用于烘干棉花
3sets 1,200,000kcal hot air furnaces for Xinjiang cotton drying



永星工业设备
YXBOILER
WWW.YXBOILER.COM

sales@yxboiler.com +86-13037600603



陕西延安洗涤行业
4吨低氮燃气蒸汽锅炉
4tph low nitrogen gas steam boiler for Shanxi washing industry



沈阳食品公司
2吨燃气冷凝锅炉
2 t/h gas condensing boiler for Shenyang food company



青海格尔木医药化工行业
40吨燃煤蒸汽锅炉
40 t/h coal fired steam boiler for Golmud pharmaceutical chemical industry



山西太原建筑企业
6吨过热蒸汽锅炉
6t/h gas superheated steam boiler for Shanxi construction enterprise



新疆克拉玛依石油企业
60万大卡撬装式燃气导热油炉
600,000kcal Mobile gas thermal oil heater for Xinjiang petroleum enterprises



云南昆明木业公司
160万大卡生物质导热油炉
1,600,000kcal biomass thermal oil heater for Yunnan wood industry company

生产基地: 中国河南太康锅炉产业园
Address: Boiler Industrial Zone, Taikang, Henan, China
website: www.yxboiler.com
E-mail: sales@yxboiler.com
WhatsApp: +86-13037600603

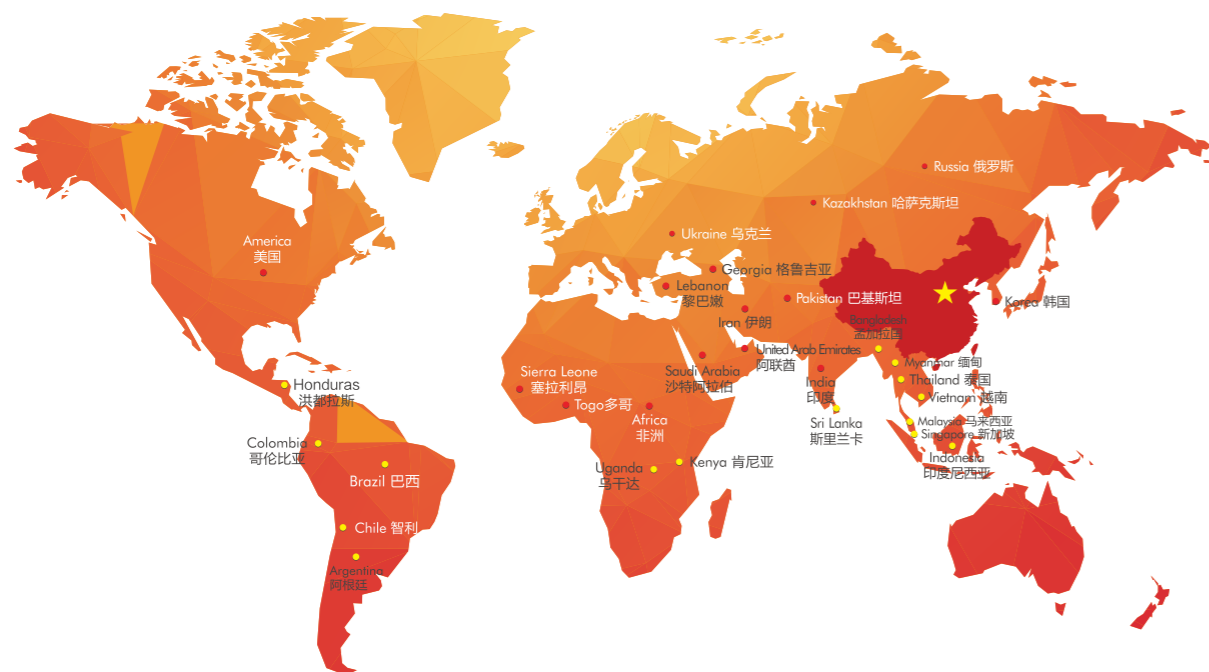
YXBOILER.COM YXBOILER.COM YXBOILER.COM YXBOILER.COM YXBOILER.COM YXBOILER.COM

BRIGHTEN YOUR DREAM

点点“星”光为您筑梦

永星特种设备专注于锅炉设备的研发、生产与销售，并提供专业的解决方案和完善的售后服务。四十年间，永星产品如一束束星光，为各行各业的发展带来光芒，照亮前行的方向……

Yongxing has been focusing on the research and development, production and sales of boiler equipment, providing professional solutions and perfect after-sales service. Over the past 40 years, Yongxing products have become like a beam of starlight, bringing light to the development of all walks of life and illuminating the way forward...



生产基地: 中国河南太康锅炉产业园
Address: Boiler Industrial Zone, Taikang, Henan, China
website: www.yxboiler.com
E-mail: sales@yxboiler.com
WhatsApp: +86-13037600603

